

CONCH VENTURE

中国海螺创业控股有限公司

China Conch Venture Holdings Limited

ESG

REPORT



2020年環境、社會及管治(ESG)報告

Environmental, Social and Governance Report 2020

(Incorporated in the Cayman Islands with limited liability)

(於開曼群島註冊成立的有限公司)

Stock code 股份代號 : 586

CONTENTS

About the Report 1

Statement of senior management 2

About Us 4

Overview	5
Business Layout	7
Corporate Governance	7
Business Ethics	9

ESG Management 12

ESG Strategy	13
ESG Management Structure	13
Stakeholder Engagement	14

Green Future 15

Green Opportunities	16
Environmental Management	19
Energy Use	20
Use of Resources	22
Emission Management	23

Sticking to Originality 26

R&D and Innovation	27
Quality Control	30
Service Assurance	31
Work Safety	32

Putting People First 39

Employment	40
Benefits and Care	41
Talent Development	42

Seeking Common Development 44

Supply Chain Management	45
Community Investment	46

Index to the ESG Reporting Guidelines of the SEHK'S 49

About the Report

Overview

The Report is the fifth Environmental, Social and Governance Report published by China Conch Venture Holdings Limited ("Conch Venture", the "Company", "We"), reflecting the environmental, social and governance ("ESG") performance of the company and its subsidiaries (the "Group") in fulfilling its corporate social responsibilities. The Report is an annual report about the work in the financial year from 1 January 2020 to 31 December 2020 ("Reporting Period").

Basis of Preparation

The Report is prepared in accordance with the revised Environmental, Social and Governance Reporting Guide set out in Appendix 27 to the Listing Rules of The Stock Exchange of Hong Kong Limited ("SEHK") published in December 2015.

Scope of This Report and Boundaries

The policies and data provided in the Report cover the Group, and the scope of the report is consistent with the Annual Report. Unless otherwise stated, the currencies involved in the Report are RMB.

Data Source and Reliability Assurance

The data and cases in the Report are mainly derived from the Group's statistical reports and related documents. The Board of Directors of the Company promises that the Report does not contain any false records or misleading statements, and is responsible for the authenticity, accuracy and completeness of its contents.

Verification and Approval

After verified by the management, the Report was approved by the Board on 29 March 2021.



Full Names and Shortened Forms of Companies

Full Company Name	Short Name in the Report
Anhui Conch Kawasaki Engineering Co., Ltd.	CK Engineering
Anhui Conch Kawasaki Energy Conservation Equipment Manufacturing Co., Ltd.	CK Equipment
Shanghai Conch Kawasaki Engineering Co., Ltd.	CK Shanghai
Anhui Conch Venture New Energy-saving Building Material Co., Ltd.	Conch Venture Building Material
Yangzhou Haichang Port Industrial Co., Ltd.	Haichang Port
Wuhu Conch Investment Ltd.	Wuhu Investment
Anhui Conch Venture Investment Co., Ltd.	CV Investment
Wuhu Conch Venture Enterprise Limited*	Conch Venture Wuhu
Wuhu Conch Venture Logistics Co., Ltd.*	Wuhu Logistics
Wuhu Conch Venture Environmental Protection Technology Co., Ltd.	WH Environmental Protection
Jinzhai Conch Venture Environment Engineering Co., Ltd.	Jinzhai Engineering
Ningguo Conch Venture Environment Engineering Co., Ltd.	Ningguo Engineering
Chongqing Conch Venture Environmental Protection Technology Co., Ltd.	Chongqing Environment
Qiyang Conch Venture Environment Engineering Co., Ltd.	Qiyang Environment
Shuangfeng Conch Venture Environmental Protection Technology Co., Ltd.	Shuangfeng Environment
Baoshan Conch Venture Environmental Protection Technology Co., Ltd.	Baoshan Environment
Bozhou Conch Venture New Energy-saving Building Material Co., Ltd.	Bozhou Building Material
Yiyang Conch Venture Environment Energy Co., Ltd.	Yiyang Energy
Guiyang Conch Venture Environmental Protection Technology Co., Ltd.	Guiyang Environment
Suzhou Conch Venture Environmental Protection Technology Co., Ltd.	Suzhou Environment
Lujiang Conch Venture Environmental Protection Technology Co., Ltd.	Lujiang Environment
Huoqiu Conch Venture Environment Engineering Co., Ltd.	Huoqiu Engineering
Luoyang Haizhong Environmental Protection Technology Co., Ltd.	Luoyang Environment
Shaanxi Bangda Environmental Protection Engineering Co., Ltd.	Bangda Environmental
Sinochem International Corporation	Sinochem International
Shanghai Nengyuan Environmental Technology Development Co., Ltd.	Nengyuan Environment



It is my pleasure to present to all stakeholders China Conch Venture Holdings Limited's efforts in environmental, social and governance as through the Environmental, Social and Governance Report 2020.

Genuine ability is showed in every step in the past. Conch Venture, which focuses on four segments of "solid waste treatment, garbage treatment, new building materials and port logistics", has been marching forward regardless of trials and hardships since its listing around seven years ago. The Company improved itself both internally and externally, set an industry example with expertise and innovation and struggled to achieve breakthroughs and make changes, demonstrating the new vision that Conch Venture brings to China's environmental protection industry.

Looking back to 2020, the Company took firm steps to move forward even when the going gets tough. Under the severe epidemic situations both at home and abroad and the complex and volatile international economic environment, Conch Venture closely followed the five-year development plan for 2019–2023, focused on the "Dual-Engine" in the environmental protection industry, actively

assumed social responsibilities and fought against the epidemic, through which it achieved the rapid growth in the environmental protection business and at the same time ushered in a new chapter in its sustainable development.

In order to further strengthen the Board's oversight of ESG issues and identify, evaluate and manage important ESG-related issues, we began to attempt to optimise our corporate governance structure during the Reporting Period. On 29 March 2021, we established the strategic, sustainability and risk management committee that conducts research and make suggestions for our medium and long term development strategic planning, conducts research, analysis and risk assessment on our ESG issues, and ensures the establishment of an effective risk management system to assist in establishing and improving our risk control mechanism.

Climate change is a major challenge that has a bearing on the future and destiny of mankind, which requires the joint efforts of the whole society. As China aims to reach peak carbon emissions and achieve carbon neutrality, we will continuously wage a battle to prevent and control pollution, realise the synergistic effect of pollution reduction and carbon emissions reduction, accelerate the development of energy conservation and environmental protection industry, and move forward with green and low carbon transformation as outlined in the "14th Five-Year Plan" to contribute to the realisation of "green China and green future".

As an active response to the national green development policy of "green development with high priority to ecology", Conch Venture kept defending blue sky, clear water and pure land. By steadily promoting the application of new environmental technologies, it has embarked on a new journey of high-quality development. Under the "Dual-Engine" in the environmental protection industry, we firmly grasped the opportunity arising from clean technologies, which not only helped us solve the problem of "garbage besieging a city and waste besieging a city", but also enabled us to contribute to the transformation and upgrading of China's cement industry while realising "harmless, recycling-based, and intensive" waste treatment.

We made continuous efforts to boost employee benefits and care, create a safe, comfortable, free and equal working atmosphere for employees, strengthen talent attraction and comprehensive quality improvement, stimulate endogenous growth momentum, cultivate our new development momentum, and help employees grow together with us.

As a leading enterprise in the environmental protection industry, we actively assume social responsibilities. Since the outbreak of COVID-19, we have fulfilled the social responsibilities of a large enterprise and spared no effort to undertake the task of harmless disposal of medical waste during the epidemic to fortify the last security line for epidemic prevention and control. We forged ahead into the future and opened environmental protection facilities to the public so that they can understand, support and participate in environmental protection.

Conch Venture stands at the forefront and expands with keen determination, and has firm confidence of overcoming difficulties and moving ahead. It seizes opportunities and accelerates development to strive to become China's No. 1 and the world's leading large comprehensive environmental protection conglomerate and to assist in making waters clear and mountains green and creating a beautiful homeland for mankind in the future. Looking forward to the future, we will continuously step up our presence in the environmental protection sector, promote the construction of ecological civilisation, facilitate the realisation of low carbon economic development, push forward with sustainable development in an all round manner, and create sustainable value for the society.

By Order of the Board
Chairman of the Board
Guo Jingbin

Wuhu, China

About Us

2020 ESG REPORT

Environmental, Social and Governance Report

Overview

Conch Venture is a large conglomerate that provides a package solution for energy conservation and environmental protection. It operates business in the fields of solid waste treatment, garbage treatment, new building materials, port logistics, and manufacturing of energy saving and environmental protection equipment.

The Company has seized the opportunities from green development, and its main environmental protection businesses have been upgraded during the transformation. It has developed two core environmental protection businesses, namely garbage treatment and solid waste treatment. The Company that launched environmental protection projects domestically began to go global. The Company takes the leading position in the environmental protection industry. We have a large base for energy conservation and environmental protection technology research and development, and equipment manufacturing in Wuhu, Anhui. With R&D of environmental protection equipment for solid waste treatment and garbage treatment and supporting facilities, we offer integrated services for project investment, design, assembly, construction and installation, as well as operation and management.

Statistics showed that the Company had more than 170 subsidiaries and employed over 5,400 employees as of the end of the Reporting Period. The Company's market cap peaked at HK\$70 billion and its total assets exceeded RMB54 billion, making it one of the leaders in China's



Anhui Wuhu headquarters of China conch venture Holding Co., Ltd

environmental protection sector.

Conch Venture has been practicing the idea of "Lucid waters and lush mountains are invaluable assets". It concentrates on improving the environment, abides by business ethics and fulfils its social responsibilities as a large enterprise, with a view to promoting the coordinated and sustainable development of society, economy and environment. It strives to become China's No. 1 and the world's leading large comprehensive environmental protection conglomerate.

The Company posted revenue of RMB6,604.57 million in the Reporting Period, a year-on-year increase of 28.99%. The profit before tax rose 8.62% from a year earlier to RMB8,052.72 million, and the main business net profit attributable to the company's equity shareholders grew 24.55% from a year earlier to RMB1,230.19 million.



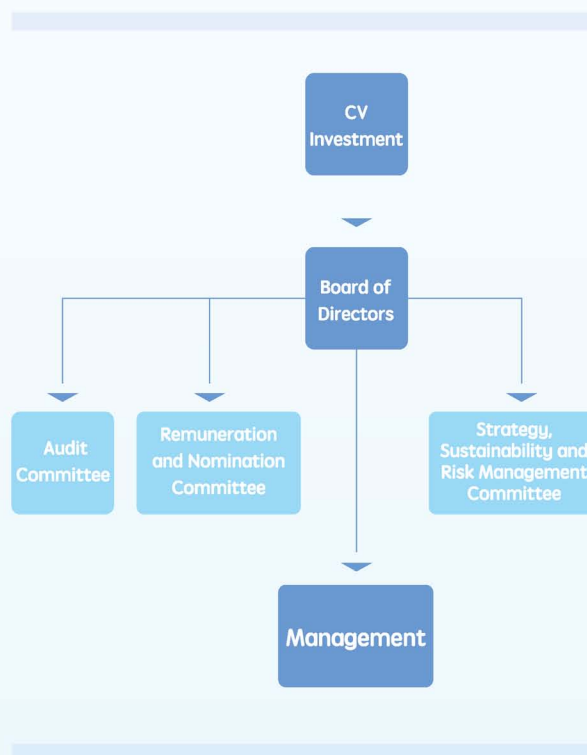


Corporate Governance

The Company is committed to achieving high standard of corporate governance in order to protect the interests of the Shareholders and improve corporate value and accountability. The Company acknowledges the importance of the Board in effectively leading and managing the business of the Company and ensuring the transparency and accountability of the Company's operation. The Company has adopted the Corporate Governance Code set out in Appendix 14 to the Listing Rules as its corporate governance code.

The Company conducted its business in accordance with the principles and provisions set out in the Corporate Governance Code during the Reporting Period. It has further improved the corporate governance structure and enhanced its corporate governance under the guidance of regulatory documents, including the Listing Rules and the articles of association.

The Board is responsible for leading, overseeing and managing the Company. It has set up an audit committee, remuneration and nomination committee, and strategic, sustainability and risk management committee to monitor specific affairs respectively.



Board Diversity

The Company recognises and believes that diversity of board members is conducive to improving its performance. So the Board adopts a board diversity policy which sets out the approach to achieve diversity of the Board. When determining the composition of the Board, the Company will consider the skills, industry experience, background, ethnicity, expertise, culture, independence, age and gender of board members, in order to establish and maintain a diverse board. It maintains the perspective of board diversity, especially views consistent with its strategies and objectives. Regular evaluation is performed to review board diversity and the progress in achieving the diversity goals. During the Reporting Period, the Company achieved the following measurable objectives of its board diversity policy:

80% At least 80% of board members are college/university-educated 

 At least 60% of the board members have obtained accounting or other professional qualifications **60%**

80% At least 80% of the board members have relevant working experience in China 

During the Reporting Period, the profile of the Company's directors is as follows:

Name of Director	Committee	Duty	Experience		
			Risk management	Financial management	Industry experience
Mr. Guo Jingbin	Strategy, Sustainability and Risk Management Committee	Executive Director and Chairman of the Board			✓
Mr. Ji Qinying	Strategy, Sustainability and Risk Management Committee	Executive Director and CEO			✓
Mr. Li Jian		Executive Director and Deputy General Manager			✓
Mr. Li Daming		Executive Director and Deputy General Manager			✓
Mr. Chang Zhangli	Remuneration and Nomination Committee, Strategy, Sustainability and Risk Management Committee	Non-executive Director			✓
Mr. Chan Chi On	Audit Committee, Remuneration and Nomination Committee, Strategy, Sustainability and Risk Management Committee	Independent Non-executive Director	✓	✓	
Mr. Chan Kai Wing	Audit Committee, Remuneration and Nomination Committee	Independent Non-executive Director	✓	✓	
Mr. Lau Chi Wah, Alex	Audit Committee, Remuneration and Nomination Committee	Independent Non-executive Director	✓	✓	

Training for Directors

The Company updates directors on the latest developments in relation to the Listing Rules and other applicable regulatory requirements, and provides training to develop and update the knowledge and skills of directors. During the Reporting Period, the directors received training as follows:

Training content



In August 2020, Some of the company's senior executives attended the senior seminar for board secretaries of A+H companies cum the 52nd Enhanced Continuing Professional Development (ECPD) seminar, online lectures held by the Hong Kong Institute of Chartered Secretaries and the Shanghai Stock Exchange. The relevant information was circulated among directors.

The Company periodically pushed the Environmental Protection Industry News week to directors for them to understand industry development trends.

Its directors and senior executives were dispatched to attend trainings on the rules and cases relating to securities trading and insider information organised by law firms.

Internal Control and Risk Management

Under the guidance of internal documents including Internal Control Application Guidelines, Risk Management Handbook and Internal Control Handbook, the Company clarified internal audit function and established an appropriate risk management and internal monitoring system to record accounting, risk management and management information in a comprehensive, accurate and timely manner. The effectiveness of the risk management and internal monitoring system is evaluated, and an annual internal control report is generated every year to provide

risk control guidance. In addition, an independent organization will review the risk management and internal monitoring system of the Company and its subsidiaries, report directly to the audit committee and its Board if there is a serious deficiency in internal monitoring in the system and take reasonable actions to make timely improvement.

For further information on the Company's corporate governance, please refer to the Corporate Governance Report section in its annual report.

Business Ethics

Compliance with laws and regulations and adherence to business ethics are the foundation for the long term and sound development of Conch Venture. Conch Venture always abides by the professional ethics and ensures the fair and just operation through a complete business ethics management and training system, in a bid to strive for openness, transparency and safety. In our operations, we strictly comply with the applicable laws and industry standards of the places where we operate business, evaluate the accuracy and appropriateness of the information we release to avoid exaggerated or false information.



Anticorruption

Conch Venture strictly complies with applicable laws and regulations, including the Criminal Law of the People's Republic of China, the Company Law of the People's Republic of China and the Anti-unfair Competition Law of the People's Republic of China. It clearly regulates the conduct of itself and employees to avoid corruption and bribery, money laundering, monopoly and unfair competition, insider trading, conflicts of interest, etc. through internal regulations and related systems, such as Ethics Guide, Anticorruption Policy, Gifts and Entertainment Policy, and Management Measures for Complaints and Reports.

System Design	The risk management and internal monitoring system was established, and a check-and-balance mechanism governing the division of duty and authority of each level-2 department has been implemented to reduce or even eliminate any chances of misconduct.
Team Building	A two-way communication or rotation system was adopted for key positions, and actions were taken to ensure the effective operation and continuous improvement of the punishment and prevention system.
Supervision and Management	An audit department was set up to supervise all work and conduct special and routine audits on a regular basis. Meanwhile, there is a reporting channel, through which all employees have the right to report the violations of laws and regulations and the conduct that damages the Company's interests to the Company or the relevant departments.

In terms of business ethics, Conch Venture mainly receives reports and complaints on the violations of laws and regulations within the scope of the Company through letters, e-mails, faxes, telephone calls, short messages, visits and other forms from the inside and the outside. After that, the Company will investigate the reported problems according to laws, resolve contradictions, verify the disciplinary problems, and correct the unhealthy practices, in order to create an honest business atmosphere and promote its harmonious development.

Basic Principles of Reporting	The legitimate democratic rights of the parties concerned shall be safeguarded.
	It should insist on seeking truth from facts.
	Practical problems should be solved according to relevant laws and articles of association.
Whistleblowe Policy	The Company advocates and encourages real name reporting. The whistleblower should guarantee the authenticity of the information provided.
	Employees shall strictly comply with the confidentiality system and shall not divulge the contents of the files to unrelated persons. Any unit or individual is strictly prohibited from interfering with and obstructing the case and the whistleblower or retaliating against the whistleblower during the investigation and collection of evidence. Violators will be held responsible.
Investigation Process	A department is designated to receive complaints and reports according to the different levels of the whistleblower.
	According to the different positions of the whistleblower, the reported cases are transferred to relevant functional departments for investigation and handling.
Results of Handling	For problems that do not constitute violations of laws and regulations, the person being reported shall be instructed to make explanations on the problems reflected and be criticised and educated.
	Reports with specific problems and clear clues that require investigation for legal responsibilities and disciplinary punishments will be investigated and handled in accordance with the procedure for filing a case. If a criminal case is involved, it will be transferred to judicial organs for handling.
	Reports without clear clues or specific facts that are not investigable will be registered tentatively. The reports will be investigated after clear clues are found.

In terms of awareness building, Conch Venture, which adheres to the policy of "prevention takes priority, publicity comes first", requests all employees to sign the Letter of Responsibility for Integrity and the Integrity Pledge every year. New recruits and promoted employees are required to have face-to-face communication with middle and senior leaders to have their anticorruption awareness raised. In routine work, we arrange employees to watch anticorruption related multimedia materials from time to time to promote the anticorruption and anti-commercial bribery idea. Integrity is publicised to routine work in all aspects to effectively promote the fight against corruption, pass on the spirit of anticorruption and enhance integrity awareness, so as to take precautions and check erroneous ideas at the outset in all sectors and with zero tolerance attitude.

During the Reporting Period, we further clarified the anticorruption management requirements through system iterations and strengthened management and control through self-inspection and reporting, internal inspection and rectification, regular special audits, daily audits and other measures to create a clean working atmosphere and strictly put an end to corruption incidents. The Company had not been served with any lawsuit over corruption during the Reporting Period.

Internal audits were conducted on 47 subsidiaries during the Reporting Period to further ensure the implementation of systems.

Business Information Protection

Conch Venture, an environmental protection enterprise with leading technology, attaches great importance to the information security and business secrets of its customers and partners. To ensure the security of our internal office information, we uploaded all production data and office information to the cloud via the internal office platform and operation monitoring platform of Anhui Conch Group Co., Ltd. to ensure the confidentiality and stability of our data. In addition, we use offline backup and set up an archive room for unified management, in order to ensure the security of our business information.

Moreover, we publicise information security among new recruits and specify requirements for specific behaviour in the employee handbook to improve their awareness of the security of office information. No major leaks of information and business secrets occurred during the Reporting Period.

ESG Management

2020 ESG REPORT

Environmental, Social and Governance Report

ESG Management

Conch Venture has been actively practicing the concept of sustainable development, establishing and continuously improving the ESG management structure, and promoting and optimising ESG management.

ESG Strategy

The Group's development goals are to step up its presence in the environmental protection industry, facilitate ecological civilisation construction and promote the development of low-carbon economy. We pay attention to the needs of all stakeholders, take environmental responsibilities and social responsibilities as our own responsibilities, and incorporate them into corporate strategic decision-making to promote sustainable development to a new level and create sustainable value for the society.

ESG Management Structure

The Company actively integrates ESG management into all aspects of its operation management. Considering our businesses and development, we reduced the energy consumption per unit, improved disposal processes, actively communicated with all stakeholders, and strengthened the ESG management, as efforts to achieve sustainable economic, social and environmental development. On 29 March 2021, the Board approved the establishment of strategic, sustainability and risk management committee headed by Chairman Guo Jingbin. It also set up a top-down ESG management structure consisting of the Board, committees and functional departments, whose responsibilities are clearly defined and work are coordinated. The details are as follows:

Board of directors

- Be responsible for assessing and identifying environmental, social and governance risks to the Group.
- Examining and approving ESG policies.
- Examining and approving ESG reports.

Strategic, sustainability and risk management

- Conducting research and making suggestions for the Company's medium- and long-term development strategies.
- Conducting research, analysis and risk assessment on its ESG-related issues.
- Ensuring the establishment of an effective risk management system to continuously monitor its risk management measures.
- Reviewing ESG report.

Functional departments and subsidiaries

- Assigning dedicated individuals to be responsible for the collection of ESG-related data and preparation of an ESG report.
- Reporting regularly to the management of the Company to assist them in assessing and determining whether ESG-related risk management and internal control system is appropriate and effective.

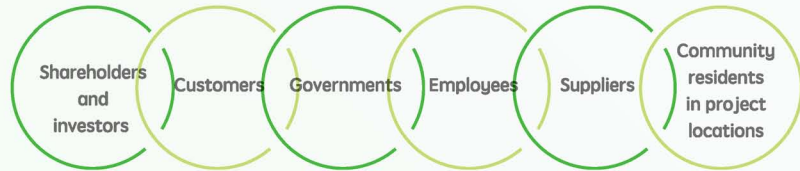
The Company has included ESG-related performance indicators, such as environmental liability accidents, environmental penalties and safety-related accidents, in the annual objective assessment, in order to further incorporate the ESG concept into its strategy and operation management. Such indicators are linked to the performance and remuneration of the management at all levels, we will take corresponding measures of reward and punishment to the management based on their performance.

Stakeholder Engagement

Based on our strategy and principal businesses, we identified six groups of key stakeholders that reflected our impact on the economy, environment and society through internal and external analysis and talks with various departments.

We have established a normalized communication mechanism to keep stakeholders engaged. During the Reporting Period, through face-to-face interviews, platform questionnaire surveys and other methods, we have a comprehensive understanding of the suggestions and future expectations of various stakeholders of the company.

On the basis of the material issues in 2019, Conch Venture adopted the opinions of stakeholders, adjusted and analysed the materiality assessment results, and developed the materiality matrix. We identified 13 highly important issues, such as occupational



health and safety measures, greenhouse gas emissions and wastewater discharge, as important directions for our sustainable development. We will disclose information on these types of issues in the Report.

Governance and social issues

Occupational Health and Safety Measures	1
Development and Training	2
Employee Rights and Standards	3
Supply Chain Management	4
Employment and Labour Practices	5
Anticorruption	6
Community Investment	7
Product Health and Safety	8
Potential Impact of the Environment and Natural Resources on the Company	9
Use of Packaging Materials	10
Customer Privacy	11

Advertising Labels for Products and Services	12
Environmental issues	
Greenhouse Gas Emissions	13
Air Emissions	14
Wastewater Discharge	15
Water Resources	16
Hazardous Waste Discharge	17
Clean Technology Development	18
Indirect Energy	19
Direct Energy	20
Production Materials	21
Non-hazardous Waste Discharge	22

Green Future

2020 ESG REPORT

Environmental, Social and Governance Report

Conch Venture, which sticks to green development, has always given the top priority to the protection of ecology and environment from design, construction and operation of projects, practicing the concept of energy conservation and emission reduction. As a provider and operator of environmental protection services, we actively grasped advanced clean technologies and made innovation in eco-friendly disposal processes so as to make constant contributions to sustainable social development.

Green Opportunities

To accelerate the realisation of China's commitment to reaching peak carbon emissions and achieving carbon neutrality, the Company responded to the national green development policy of "green development with high priority to ecology" and kept defending blue sky, clear water and pure land. Based on the development of industry, Conch Venture grasped the opportunity arising from clean technologies, which not only helped it solve the problem of "garbage besieging a city and waste besieging a city", but also enabled it to contribute to the transformation and upgrading of China's cement industry while realising "harmless, recycling-based, and intensive" waste treatment.

There are stricter and higher requirements for the prevention and control of pollution by solid wastes specified in the Law of the People's Republic of China on Prevention and Control of Environmental Pollution by Solid Waste. The demands for disposal of local governments' household waste, industrial hazardous waste and industrial solid waste were on the rise. With the formal inclusion of waste classification into the solid waste law, China is vigorously advocating waste classification throughout the country. Major development trends and favourable policies will continuously consolidate Conch Venture's advantages in the environmental protection industry and accelerate the structural upgrading of the industry, with which it will create green mountains, clear water, blue sea and azure sky.

The Group concentrated on solid waste treatment and garbage treatment in 2020 to develop its primary environmental protection businesses both in scope and in depth.



Industrial solid and hazardous waste

The Company's self-developed technology of the collaborative treatment of industrial solid and hazardous waste by cement kiln can thoroughly dispose industrial solid waste at high combustion temperatures in cement kilns. It produces no ash while solidifying heavy metals, which has achieved a high degree of recycling.

During the Reporting Period

Total of **32** projects about the collaborative treatment of industrial solid and hazardous waste by cement kiln were put into operation

with available disposal capacity of **3.81** million tonnes per year

The Company disposed of **1.5** million tonnes of solid and hazardous waste during the Reporting Period, with **1.061** million tonnes of solid waste and **432,000** tonnes of hazardous waste.

Calculated based on the average indensity range of 1-1.2 tonne per cubic metre for disposal of solid and hazardous waste, it is equivalent to a reduction of **1.5-1.8 million cubic metres** of landfill space.

According to the standard of 0.5-0.6 tonnes of residue generated from per tonne of solid waste burned, about **750,000-900,000 tonnes** of residue were produced during the Reporting Period. Production 1 tonne of cement clinker requires about 1.63 tonnes of residue. The residue generated during the Reporting Period can be used as raw combustion materials for the production of **460,000-550,000 tonnes** of cement clinker.

Household waste

The Company teamed up with Japan's Kawasaki Heavy Industries on technology research and development to cater to the needs of development in China's urban and rural areas. It absorbed foreign advanced waste incineration technology and developed an innovative technology of grate furnace power generation according to the actual situation in China to better adapt to market demands at home and abroad. In the meantime, it developed the technology concerning the co-processing of municipal solid waste in cement kilns, helping solve problems, including landfill treatment of municipal waste, occupying of a large amount of land and environment pollution.

During the Reporting Period

Total of **38** garbage treatment segment projects came into operation, among which **22** were projects of grate furnace power generation and the **16** were projects of concerning collaborative treatment of municipal waste by cement kiln.

The total disposal capacity stood at **5.11** million tonnes per year.

Total of **3.6 million tonnes** of household waste were received, and **3.06** million tonnes of household waste were disposed. Among which **2.83 million tonnes** of household waste were received and **2.31 million tonnes** of household waste were disposed in projects of grate furnace power generation, generating **954 million kWh** of electricity. Among which **770,000 tonnes** of household waste were received and **745,000 tonnes** of household waste were disposed in projects concerning collaborative treatment of municipal waste by cement kiln.

According to the traditional way to dispose of municipal waste, disposal of 1 tonne of waste takes up about 1 cubic metre of land, which is equivalent to a reduction of **3.6 million cubic metres** of landfill space. Based on the average carbon content of garbage of 22%, burning 1 tonne of garbage can reduce 0.27 tonnes of carbon dioxide emissions, equivalent to a reduction of **826,000 tonnes** of carbon dioxide emissions.

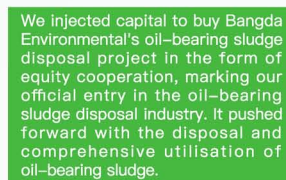
Based on the characteristics of the industry that it operates business, Conch Venture gave full play to the advan-

tages of resources, firmly seized the opportunity from clean technologies and facilitated green development with advanced technology of disposal of industrial solid and hazardous waste. Relying on Anhui Conch Cement's cement kiln production line, the Company has established a joint venture with China National Building Material Co., Ltd. and Inner Mongolia Mengxi Cement Co., Ltd., respectively to expand their solid and hazardous waste disposal business across the country. Substantive progress has been made in projects, which has effectively alleviated the problem of standardised disposal of industrial solid waste, especially hazardous waste.

In addition, we attached great importance to the research and development of new technologies, and constantly expanded the research field. Under the existing "Dual-Engine", we actively explored new technologies and research directions, strove to seize new opportunities in the environmental protection industry, and offered services for the entire industry chain, so as to achieve interconnection and communion, and mutual benefit and win-win results. According to a development plan of non-cement kiln techniques we formulated, we are actively promoting the implementation of projects, including fly ash treatment, oil-bearing sludge disposal, dry distillation and pyrolysis projects, in order to enrich our business in various segments of the environmental protection industry. During the Reporting Period, our major cooperative projects are as follows:



We collaborated with Sinochem International to carry out a project about the co-processing of fly ash in cement kilns and recycling using the latter's dechlorination of fly ash by water washing, salt crystallisation and recovery and advanced safety management system.



We injected capital to buy Bangda Environmental's oil-bearing sludge disposal project in the form of equity cooperation, marking our official entry in the oil-bearing sludge disposal industry. It pushed forward with the disposal and comprehensive utilisation of oil-bearing sludge.



We set up a joint venture with Nengyuan Environment to promote the implementation of the development strategies with regard to soil remediation and terminal disposal.

With the gradual popularisation of garbage sorting policy, the Group will also actively set foot in restaurant and kitchen waste disposal and other segments. It will co-process restaurant and kitchen waste through grate furnace power generation. In the future, efforts will be made to tap into new business fields, including sludge power generation, give full play to the collaborative model that saves investment and coordinates operation, and further expand the industry chain. It will take a more active attitude and adopt a more comprehensive strategy to safeguard the green development of mankind and protect the planet.

Environmental Awareness Raising

Conch Venture has always been practicing the idea of "Lucid waters and lush mountains are invaluable assets". All the projects are open to the public. Some of the projects have exhibition and educational areas for environmental protection, which have science education, learning and practice and other functions. We are making great efforts to develop environmental protection business. Meanwhile, we are actively spreading the knowledge of ecological and environmental protection to the public, publicising environmental protection, and striving to disseminate the ideas of green value and sustainable ecological development to cultivate the public's concept of ecological civilisation construction.

WH Environmental Protection, Chongqing Environmental, Qiyang Environment, Ningguo Engineering, Shuangfeng Environment and Baoshan Environment were among the fourth batch of companies that opened their environmental protection facilities and urban sewage and garbage treatment facilities to the public during the Reporting Period. Lujiang Environment was honoured as "an ecological and environmental education base in Hefei". Huoqiu Engineering won the title of "an advanced unit in the ecological and environmental industry in Lu'an". It organised some public open days and invited groups from all walks of life to learn about the practical results of Conch Venture in fulfilling social responsibilities and making great efforts to protect the clear waters and green mountains. In the future, Conch Venture will keep building "garden-like plants". It will open the door to the public, consciously accept the oversight of the general public, strengthen exchanges and communication with them, get rid of the not-in-my-backyard (NIMBY) phenomenon, and promote the sound development of the environmental protection industry.



We organised a campaign themed on "Beautiful China, I am the doer" and held green cycling, environmental protection knowledge publicity, riverside cleaning plan and other activities, in a bid to further enhance the public awareness of environmental and ecological protection and celebrate the 49th World Environment Day.



Environmental Management

We have actively regulated the procedures to handle documents and permits to ensure that project construction and operation are in compliance with laws and regulations, and to minimise and reduce the impact on the environment, in order to follow the requirements in a series of laws and regulations and local standards, including the Environmental Protection Law of the People's Republic of China, the Air Pollution Prevention and Control Law of the People's Republic of China and the Water Pollution Prevention and Control Law of the People's Republic of China, ensure the legal compliance of the project approval, construction and operation process, and respond to the call for environmental protection.

Construction	Operation
Environmental impact assessment report and approval	Record form of environmental emergency plan
Environmental supervision	Pollutant discharge permit
Inspection and acceptance of environmental protection of the completed construction	Hazardous waste permit
Approval document for environmental protection acceptance	Pollutant discharge report
"Three simultaneities" (simultaneous design, construction and operation) system for project construction	Clean production
	Regular self-monitoring of environment

In accordance with the requirements of national regulations and our actual production and operation, we specially set up a safety and environmental protection committee headed by the general manager, and established a safety and environmental protection responsibility system to define the safety and environmental responsibilities of the leaders at all levels and the employees of each department and each subsidiary, in order to strengthen

our safety and environmental management, clarify the responsibility of safety and environment management, improve the safety and environmental awareness of all employees. Complete management systems were laid down at the same time as follow:

- Environmental management system
- Environmental inspection management system
- Environmental protection facility operation management system
- Environmental protection acceptance management system
- EIA management system
- Pollutant discharge permit management system
- Environmental self-monitoring and supervisory monitoring management system
- Pollutant discharge management system
- Environmental information and monitoring information disclosure management system
- Environmental protection accountability system
- Management system for standardisation of discharge outlets
- Online pollutant monitoring equipment and data management system

We actively helped our subsidiaries obtain environmental management system certification. Currently, our subsidiaries, including CK Engineering, CK Equipment, Conch Venture Building Material, Wuhu Investment, Jinzhai Engineering, CK Shanghai and WH Environmental Protection, have all obtained the ISO 14001 Environmental Management System certification.

Environmental management

We took various measures to strictly control resource usage and pollutant discharge during project construction and operation, in a bid to ensure the compliance of all the projects we build and operate.

As far as environmental protection acceptance concerned, we arranged acceptance check for supporting environmental protection facilities during project construction in strict accordance with relevant standards and norms, so as to ensure that the environmental protection facilities and the main body of the project simultaneously come into production and use. We regularly guided, oversaw and inspected the implementation of the pollutant discharge permit system of subsidiaries during routine operations. Subsidiaries were required to carry out environmental monitoring, and promptly disclose information on pollution discharge, construction and operation of pollution prevention and control facilities, emergency plans for environmental incidents, and administrative licensing for environmental protection.

Environmental inspection

An inspection plan is mapped out every year to inspect the environmental management of all subsidiaries, and assessment opinions are put forward for those found with irregularities, in a bid to enhance environmental management awareness and standardise their environmental management. These are to strengthen the Company's environmental supervision and inspection management.

Environmental emergency

We have formulated emergency rescue plans for environmental accidents and launched drills on a regular basis. Once an environmental pollution accident occurs, we will take immediate measures in accordance with the emergency plans and promptly notify the units and individuals that may be endangered, in order to eliminate or reduce pollution to the environment. Moreover, procedures for handling and reporting accidents were set out. We will report an accident to the environmental protection authorities immediately after the accident takes place. We will cooperate with relevant departments to take emergency measures and be under investigation.

Environmental accountability

We established environmental accountability systems, including the Rules for the Implementation of Environmental Protection Accountability System, and implemented a strict annual target assessment responsibility system. In the event of an environmental incident or an environmental liability accident, the relevant responsible person will be subject to administrative sanctions, and the annual target assessment scores will be cut.

Environmental training

We require employees to receive training before they can start their work, in order to standardise our environmental education and training work and improve employees' environmental awareness and skills. The environmental training activities we regularly organise in routine work include training on environmental protection laws and regulations, policy interpretation, operation and maintenance of environmental protection facilities, self-monitoring, application of pollutant discharge permits, environmental protection acceptance, as well as training on application of environmental protection permits. We also inspect the implementation of environmental training. In addition, environmental protection activities, including activities on World Environment Day on 5 June and public open days, are held every year, so as to further consolidate the basic environmental management of subsidiaries and establish a good public communication system.

Energy Use

The problem of climate change caused by energy use has become increasingly prominent. It has become the common responsibility of all human beings to reduce energy use and carbon dioxide emissions. Conch Venture, as an enterprise providing a "package solution" for energy conservation and environmental protection, takes concrete actions to implement the national policy on emissions reduction in routine production and operation, and strictly complies with the national and local laws and regulations, including the Energy Conservation Law of the People's Republic of China, to vigorously promote measures to conserve energy and reduce emissions, strive to reduce greenhouse gas emissions, and make all-out efforts to address climate change.

At present, Conch Venture's main energy sources include purchased electricity, gasoline, diesel and a small amount of natural gas. Purchased electricity is mainly used for the production and operation of solid waste disposal projects and daily office operations. Gasoline consumption mainly comes from company cars. Diesel is mainly used to power mechanical equipment, waste transportation vehicles and boilers during start-up and running in the power generation with municipal waste segment.

We strictly control energy consumption in daily operations, in order to reduce greenhouse gas emissions while reducing costs and increasing efficiency. An Annual Comprehensive

Production and Operation Plan is formulated every year to conduct planned control of energy use, in a bid to increase energy use efficiency. Besides, we reasonably control the amount of energy purchased by summarising the energy purchase plan of each subsidiary and combining the production and inventory every month.

Solar photovoltaic

We actively promote the use of renewable energy to reduce carbon emissions. CK Equipment and Wuhu Guodian Investment Conch Clean Energy Co., Ltd. cooperated. Based on the principle of win-win cooperation and mutual benefit, CK Equipment used the roofs of the three factories to invest about 33,899 square meters of photovoltaic power generation. The total amount of photovoltaic power plants connected to the grid each year is approximately 290,000 kilowatts.

Ground Source Heat Pump (GSHP) air conditioning

Various energy conservation measures were taken to reduce energy consumption during the Reporting Period. Subsidiaries, including, Ningguo Engineering and Luoyang Environment, use ground source heat pump air conditioning. Ground source heat pump, a new energy utilisation technology that uses shallow geothermal energy for heating and cooling, can save energy by around 50%–70% compared with traditional air conditioners. It is a type of renewable energy technology that does not involve combustion means no flame, produces no waste and causes no pollution.

Boiler economiser

Electricity consumed by grate furnace power generation, as an energy production sector, is non-purchased electricity. However, we formulated and implemented an opti-

misation plan of adding boiler economisers to reduce boiler exhaust heat loss and increase boiler heat exchange efficiency by about 2%, in order to improve power generation. Transformation for 20 boiler economisers was completed, which has significantly reduced energy loss.

Technological upgrading

We made great efforts to promote various technological upgrading measures in many segments and advocated the use of circulating water pumps to save electricity consumption. Jinzhai Engineering finished the technological upgrading for circulating water pumps during the Reporting Period. Afterwards, it can save electricity by around 1,327 kWh a day. In addition, we equipped variable frequency motors for circulating water pumps, cooling tower fans, induced draft fans, primary air fans and other devices to adjust power and reduce electricity consumption according to the actual operation. As the use of compressed air in the acetylene and steam soot blowing system leads to high electricity consumption and easy corrosion and damage of pipes, we installed low-energy vortex blowers, which can save 1,200–1,600 kWh of electricity per day.

Energy conservation via office facilities

In terms of office facilities, we designed and managed the workshop in a closed manner, and each office building was set with an insulation layer to reduce the electricity consumption for heating in production and office operation. In addition, a series of energy conservation requirements were put forward, such as turning off lights and air conditioners when employees leave offices and dormitories.

Our energy use and greenhouse gas emissions during the Reporting Period are as follows:

Energy types	Unit	Consumption in 2020
Natural gas	Standard cubic metre	1,325,896
Gasoline ¹	Litre	729,830
Diesel ²	Litre	6,288,984
Purchased electricity	kWh	73,142,584
Energy consumption	Unit	Energy consumption in 2020
Direct energy consumption	Tonne of standard coal	10,240
Indirect energy consumption	Tonne of standard coal	8,989
Total energy consumption	Tonne of standard coal	19,229
Energy consumption per unit of revenue	Tonne of standard coal/RMB'000000	2.9
Greenhouse gas emissions ³	Unit	Emissions in 2020
Scope 1	Tonne of CO _{2e}	21,092
Scope 2	Tonne of CO _{2e}	49,793
Total greenhouse gas emissions	Tonne of CO _{2e}	70,885
Greenhouse gas emissions per unit of revenue	Tonne of CO _{2e} /RMB'000000	10.7

¹ During the epidemic, the company reduced unnecessary travel activities. The gasoline usage of its own vehicles has declined.

² Data includes fixed source and mobile source.

³ The calculation of greenhouse gas emissions is based on the Guide to Accounting and Reporting of Greenhouse Gas Emissions of Enterprises in Other Industries (Trial) published by China's National Development and Reform Commission.

Use of Resources

We strive to reduce the use of resources in daily activities, strengthen the protection of natural resources, and jointly create an environment-friendly business.

Water Resource Management

We strictly comply with national and local laws and regulations, including the Water Law of the People's Republic of China and the Regulation on Water Withdrawal Permits and Collection of Water Resource Fees, and conduct water resources argumentation according to the Measures for Management of Water Resources Argumentation for Construction Projects and other national requirements. Based on the actual water resources and water consumption demand in the places where projects are located, Water Resources Argumentation Report for Projects was prepared and approved, which is used to reasonably determine the water withdrawal sources. Our main water sources include municipal water and reclaimed water treated by wastewater treatment plants. For some remote projects without municipal water source, surface water is used as the water source. Municipal water is mainly used for daily office operation and as boiler water, while recycled water treated by wastewater treatment plants and surface water are mainly used as circulating cooling water for grate furnace power generation and as fire water.

Great importance is attached to the protection of water resources around projects, and water resources are used in strict accordance with the requirements. The use of underground water

is strictly prohibited. This is to reduce the impact of surrounding residents' use of groundwater.

Utilisation of water resources is optimised from various aspects. Water recycling has been taken into account in project establishment and process design stages. Water recycling design is enhanced in multiple parts. We used 4,148 tonnes of recycled water during the Reporting Period, with water recycling rate of more than 80%.

Water recycling design

Circulating cooling water and wastewater are used for irrigation, road washing, water replenishment for slag conveyors after sedimentation treatment.

The effluent from leachate treatment is used as makeup water for circulating cooling water, and the concentrated liquid produced is used for the preparation of lime slurry in the flue gas purification system and fly ash stabilisation.

After treated by wastewater treatment devices, household water is reused in the circulating cooling system in the production process.

Electrochemical devices are added in the process of circulating water treatment to reduce discharge and water consumption.

During the Reporting Period, the types and total amount of water resources used by Conch Venture are as follows:

Types of water resources	Unit	Total water consumption in 2020
Total water consumption ⁴	Tonne	3,274,555
Water consumption per unit of revenue	Tonne/RMB'000000	495.8

Packaging material management

The Company attaches great importance to the use of packaging materials and strictly manages packaging materials in all aspects. Conch Venture now mainly uses packaging materials in the new building materials segment and the equipment manufacturing segment. The packaging materials it uses are mainly plastics, cartons and wood. We endeavor to reduce the use of packaging materials, adhere to the principle of no waste and constantly optimise packaging materials to cut back on usage.

During the Reporting Period, the types and total volume of packaging materials used by Conch Venture are as follows:

⁴ Total water consumption includes municipal water consumption, sewage treatment plant reclaimed water consumption, and natural water intake.

Types of packaging materials	Unit	Total packaging materials consumption in 2020
Plastics	Tonne	26
Cartons	Tonne	2,287
Wood	Tonne	1,363
Other	Tonne	1
Total volume of packaging materials used	Tonne	3,677
Volume of packaging materials used per unit of revenue	Tonne/RMB'000000	0.6

Emission Management

We strictly comply with relevant laws and regulations, including the Environmental Protection Law of the People's Republic of China, the Air Pollution Prevention and Control Law of the People's Republic of China, the Water Pollution Prevention and Control Law of the People's Republic of China, the Law of the People's Republic of China on Prevention and Control of Environmental Pollution by Solid Waste, as well as the Law on the Prevention and Control of Noise Pollution of the People's Republic of China. Besides, the pollutant discharge management system has been established. By clarifying the responsibilities of pollutant discharge management, we strengthened the management and control of the entire discharge process, standardised pollutant generation and discharge records, and eliminated unorganised discharge and excessive discharge.

Wastewater Management

Conch Venture has generally achieved zero discharge of industrial wastewater. Wastewater generated from the collaborative treatment of municipal waste by cement kilns and solid waste treatment, including washing wastewater and laboratory

wastewater, has been introduced and burned in the kilns, achieving zero discharge. Wastewater generated in the process of grate furnace power generation, including leachate, domestic sewage and washing water, was treated accordingly and reused in plants after reaching the corresponding recycling standards. Meanwhile, reclaimed water is used in some of our grate furnace power generation projects, in order to further improve the utilisation of water resources.

Leachate Treatment

A certain amount of leachate is generated during the stacking of household waste. We collect the leachate and take anti-seepage measures at the bottom and around waste storage pits and leachate collection tanks to avoid groundwater infiltration, as a move to reduce the hazards of leachate on the environment. A biochemical leachate treatment facility was built to treat the leachate we collect, in a bid to ensure harmless treatment. Leachate was treated according to the standard for open circulating cooling water systems stipulated in the Reuse of Urban Recycling Water-Water Quality Standard for Industrial Uses

(GB/T 19923-2005) and used as makeup water for cooling water. The concentrated liquid was incinerated in lime slurry preparation or spray into the incinerator. This has completely achieved the harmless leachate treatment and at the same time realised the recycling of the water system inside plants.

Air Emissions Management

We strictly comply with national emission standards, including the Standard for Pollution Control on the Municipal Solid Waste Incineration, the Standard for Pollution Control on Collaborative Treatment of Solid Wastes in Cement Kiln, and the Integrated Emission Standard of Air Pollutants. The application for a pollutant discharge permit was filed, and pollutant discharge was monitored in accordance with the Technical Specification for Application and Issuance of Pollutant Permit -- Municipal Solid Waste Incineration (HJ 1039-2019), the Technical Guide for Self-monitoring of Pollutant Discharge Units -- Cement Industry (HJ 848-2017), the Technical Specification for Application and Issuance of Pollutant Permit -- Industrial Solid Waste and Hazardous Waste Storage, Recycling, Treatment and Disposal (HJ 1033-2019) and local monitoring requirements. In addition, systems, including air emission management system, online pollutant monitoring equipment and data management system and environmental self-monitoring and supervisory monitoring management system, were set up to guarantee stable and

up-to-standard air emissions.

Conch Venture's air emissions mainly come from waste combustion, waste transportation vehicle emissions, production and manufacturing process. In the solid waste treatment segment, the common emissions generated by the operation of cement kilns are controlled and disposed by its partners. In addition, the pollutants such as hydrogen chloride, hydrogen fluoride and dioxin are controlled by Conch Venture.

The grate furnace power generation segment has been equipped with an online monitoring system for air emissions, in order to ensure reasonable control of air emissions and real-time monitoring of air emission generation. Through the online monitoring system, we conduct real-time monitoring on the concentrations and emissions of particulate matter, nitrogen oxide, sulfur dioxide, hydrogen chloride, carbon monoxide and other air pollutants. As for the solid waste treatment segment, we collaborate with cement producers to monitor particulate matter, nitrogen oxides, sulfur dioxide, hydrogen chloride, hydrogen fluoride, heavy metals, dioxins and other pollutants, in a bid to ensure that the pollutants meet the double emission standards for cement production and solid and hazardous waste treatment.

Corresponding measures were taken to treat different pollutants, in order to guarantee the up-to-standard emission from grate furnace power generation segment. The flue gas purification system of relevant projects usually combines "SNCR denitration + rotary spray semi-dry process + slaked lime spray + activated carbon spray + bag filter". The mature process shows a high removal rate of harmful substances, reduces the use of reactive agents and produces no wastewater, with low contents of heavy metals and dioxins in emissions. System operation is easy to control and overall cost is low. Years of practice has proved that the flue gas emission concentration after treatment by the system is lower than the implemen-

Main treatment methods of flue gas purification system

Nitrogen oxide
Selective non-catalytic reduction (SNCR) denitration
Sulfur oxide
Sulfur dioxide is treated by spraying slaked lime
Flue gas
Dust is removed with a bag-filter
Dioxins
Activated carbon absorbs dioxins
Bad smell
Negative pressure sucks the odor into the gasifier/grate furnace for incineration

During the Reporting Period, the types and total amount of air emissions generated are as follows:

Types	Unit	Total air emissions in 2020
NOx emissions ⁵	Tonne	1,300
SO ₂ emissions ⁶	Tonne	290
PM emissions ⁷	Tonne	67
CO emissions	Tonne	93
HCl emissions	Tonne	474
HF emissions	Tonne	40

Waste Management

As a provider of environmental protection solutions, Conch Venture has been committed to reducing, recycling and harmlessly treating solid waste. It produces a certain amount of solid waste in daily production and operation while treating solid waste for the society. As for general solid waste and hazardous waste generated during production and operation, we provide the regulatory authorities with relevant information such as the types, production volume, flow direction, storage and disposal of industrial solid waste in strict accordance with the provisions of the administrative environmental protection department under the State Council. The solid waste management system was laid down. The principles for waste disposal are as follows:

⁵ Data includes fixed source and mobile source. ⁶ Data includes fixed source and mobile source. ⁷ Data includes fixed source and mobile source.

- Priority should be given to the reuse of resources to reduce environmental pollution.
- No secondary pollution will be caused to the environment during the disposal process.
- The procurement department should first negotiate with the supplier whether office consumables or other wastes can be recycled by the supplier.
- A standing book should be set up to make records and statistics of the disposal process.
- It is prohibited to discard or drop solid waste along the way during transportation of the waste transferred from recycling and storage sites.

Subsidiaries were requested to sort out their solid waste by type and set up a book for registration of solid waste types. According to relevant national and local regulations, hazardous waste should be disposed of by qualified and competent units to avoid pollution transfer. The disposal situation should be tracked and recorded.

Non-hazardous waste

The non-hazardous waste generated in our operation mainly includes household waste generated in offices and operation, office waste, and slag generated during grate furnace power generation. Some non-hazardous waste was recycled. The household and office waste from the headquarters and some subsidiaries was disposed of by a municipal department, while some other subsidiaries' waste was burned in furnaces.

The slag produced during grate furnace power generation was sold for comprehensive utilisation. The slag disposal company used the slag to brick process to screen pretreated slag materials in the crusher. Various raw materials in specified quantities were poured into intelligent brick forming machines to make bricks. So waste has been rationally used and dispose of the sludge as follows:

Sludge The sludge generated during grate furnace power generation was dehydrated to reduce the moisture to less than 80%, after which it was transported to waste tanks and burned in incinerators together with municipal waste.

Hazardous waste

The main hazardous waste generated in our normal operation includes sludge, fly ash, used oil and waste bags generated during grate furnace power generation, and a small amount of hazardous waste. We stored, inspected, transported and disposed of hazardous waste in strict accordance with the requirements of EIA and relevant regulations. The specific methods are as follows:

Fly ash Heavy metals in the fly ash reacted with chelating agents to form chelates, which were stabilised. The products of stabilisation were buried in landfills according to the Standard for Pollution Control on the Landfill Site of Municipal Solid Waste (GB 16889-2008). Products that met co-processing requirements were put

Waste bags and used oil Entrust a third party to deal with compliance.

During the Reporting Period, the types and amount of solid and hazardous waste generated by Conch Venture are as follows:

Types of non-hazardous waste	Unit	Total amount in 2020
The production of non-hazardous solid waste (recyclable) ⁸	Tonne	774,177
The production of non-hazardous solid waste (non recyclable)	Tonne	12,363
Total production of non-hazardous solid waste	Tonne	786,540
Non-hazardous solid waste generated per unit of revenue	Tonne/RMB'0000	1.2

Types of hazardous waste	Unit	Total amount in 2020
Total hazardous waste disposal	Tonne	67,545
Hazardous waste disposed per unit of revenue	Tonne/RMB'0000	0.1

⁸ Mainly slag.

Sticking to Originality

2020 ESG REPORT

Environmental, Social and Governance Report

Sticking to Originality

Conch Venture, focusing on the environmental protection industry, adheres to fine, intelligent, safe management, and is constantly committed to improving the quality of products and services. It has not only optimised the industry chain externally, but also increased efforts on technology R&D. It strives to create an industry benchmark and pursues excellent quality with originality.

R&D and Innovation

The Company firmly believes that core technologies drive industrial transformation. In the context of "Green China", we strive to explore different new techniques for waste disposal. In addition to promoting the reduction and harmless disposal of all types of waste, we also add value to greening, achieve the high-value recycling of waste and establish a large cycle of solid waste recycle associated with sustainable development.

Technological Innovation

The Company strives to promote the development of environmental protection industry and explore a sustainable ecological development path, in order to achieve the goal towards a "waste free society". Conch Venture set up an environmental protection research institute during the Reporting Period and offered systematic, professional and industrialised services in the key technical fields, including household waste, industrial waste (including hazardous waste), atmospheric environment, and ecological environment of the soil, in a bid to provide high-level environmental resources in China and create a technology integration platform and a technology consulting platform. Progress has been made among treatment of fly ash, concerning organic waste pyrolysis, oil-bearing sludge disposal, kitchen waste treatment.



Collaborative treatment of Fly Ash in Cement Kilns

Collaborative treatment of fly ash in cement kilns means that fly ash is added to cement kilns as raw materials after pre-treatment to completely decompose dioxins at high temperatures and solidify heavy metal elements in clinkers, so as to harmlessly treat, recycle and reduce fly ash. With constant efforts, the fly ash pre-treated with water washing can remove many hazardous elements that may affect the working condition of cement kilns, including more than 95% of chlorine ions and more than 70% of potassium and sodium ions. The dioxins in the fly ash pre-treated are completely decomposed, and the heavy metals are effectively fixed in the cement clinker's crystal lattices, which has achieved harmless treatment and recycling of fly ash.

Organic Waste Pyrolysis

Conch Venture developed a pyrolytic solution for different types of organic waste during the Reporting Period. This solution can pyrolyse the target in the absence or near absence of oxygen, which can effectively solve problems, such as poor effect, small capacity, high cost, easy to cause secondary pollution, during incineration of organic hazardous waste. It reduces the emission of toxic substances while achieving high-value utilisation, which helps improve the municipal environment in the places where projects are located. The demonstration project in Wuhu was granted a hazardous waste permit during the Reporting Period.

Oil-bearing Sludge Disposal Technique Enhances Its Industrial Value

The oil-bearing sludge produced in the process of oil exploitation and transportation contains a variety of toxic and harmful substances, which poses a major threat to soil, surface water and groundwater. Conch Venture has developed a technical solution for the disposal of oil-bearing sludge of different properties through research and sorting. The solution can recover most of the oil components in the sludge, and the tailings can be used as building materials and road paving materials, reducing the potential environmental impact caused by traditional disposal methods such as landfill and incineration, and improving the industrial value of the sludge waste.

Low-carbon Disposal Technique for Kitchen Waste

Conch Venture uses a technique to drive the implementation of the household waste classification system. We developed the kitchen waste disposal technique that separates organic matter and oil from kitchen waste. The products are used in renewable energy fields, such as biogas power generation and biofuels. The technique can avoid the kitchen waste from being burned in the waste incinerator, which has improved the waste incineration efficiency and reduced the carbon dioxide emissions of incineration facilities.

Stepped Parallel Flow Grate Type Garbage Incineration Complete Equipment

Conch Venture deepened its cooperation with Kawasaki during the Reporting Period. The two companies collaborate sincerely and complement each other's advantages. We jointly developed a new grate furnace characterised by a high incineration temperature and a low pollutant emission concentration, etc., which can effectively reduce the emission of dioxins.

In addition, Conch Venture relied on technological transformation to eliminate backward production capacities. More than 34 technological transformation projects were launched in garbage treatment, energy saving equipment, new building materials and other segments during the Reporting Period. Outstanding results were achieved in the optimisation of product quality, efficiency and environment. CK Equipment as a high-tech enterprise, its R&D investment during the reporting period is as follows:

Performance indicators	Unit	2020
R&D investment	RMB 1 million	31.7
Proportion of R&D spending to sales revenue	%	4.91

Intellectual Property

Conch Venture complies with relevant laws and regulations, including the Trademark Law of the People's Republic of China and the Patent Law of the People's Republic of China, to strictly manage trademark registration and R&D patents. Legal training was organised for all units, especially skilled workers, so as to heighten the consciousness of intellectual property protection of all units and individuals. The ownership of intellectual property was clearly stipulated in development contracts to avoid intellectual property risks. We encouraged employees to dissuade, stop and report all kinds of infringement acts, in order to effectively protect our legitimate rights

and interests. Those who failed to protect scientific and technological achievements and thus caused losses were held responsible in accordance with relevant regulations.

Industry-university-research Cooperation

Industry-university-research cooperation is an effective combination of various production factors needed to promote technological innovation and is an advanced technological innovation system. Conch Venture is devoted to building a multi-party cooperation platform and opening up cooperation channels to promote the indepth industry-university-research cooperation, and develop green technologies with economic, social and environmental benefits.

Harmless Treatment of Fly Ash Promotes Recycling

Conch Venture, along with relevant skilled workers of Sinochem International, has developed and promoted a technique for the large scale co-processing of fly ash in cement kilns, so as to harmlessly treat, reduce and recycle fly ash generated from waste incineration. The technique not only saves the landfill space for fly ash, but also reduces the consumption of cement raw materials and achieves the recycling of waste.

Disposal of Kitchen Waste Will Reduce The Amount of Kitchen Waste to Be Burned and Buried

Conch Venture teamed up with the School of Environment and Civil Engineering, Jiangnan University on the disposal of kitchen waste during the Reporting Period. They facilitated the construction of the first kitchen garbage treatment project in Qufu, Shandong, which will reduce the amount of kitchen waste to be burned and buried. The project is expected to be put into operation in the first half of 2021.

Improved the Upgrading of Disposal Processes and Promoted R&D Capabilities to a New Level

The Company carry out in depth cooperation with the State Key Laboratory of Environmental Criteria and Risk Assessment under the Chinese Research Academy of Environmental Sciences. Under the agreement, the two sides will share technologies, resources and industry advantages, enhance the industry-university-research cooperation by improving technologies, facilities, equipment and talent support, accelerate the transformation of achievements in environmental protection, ecological construction and other technological fields, and create an environmental innovation highland featuring efficient industry collaboration and integrated development of basic and applied research.

Sticking to Originality

Industry Participation

Conch Venture, which shoulders its responsibilities in the industry, actively participated in technical exchanges in the environmental protection industry. It communicated with peers about industry experience and shared innovative technologies, in order to jointly promote the development of the industry.

Date	Name of activities
August 2020	Advanced seminar on operation of waste incineration power generation
August 2020	Summit on waste incineration power generation technology
November 2020	Waste incineration power generation technology exchange meeting
November 2020	Technology alliance conference

With the techniques and experience in waste incineration and hazardous waste disposal, we participated in the compilation of multiple national standards and technical specifications, providing favourable policy support for the development of industry technologies, guiding the plan-

ning of subsequent solid waste disposal, providing a security guarantee for the construction of a beautiful municipal environment.

List of national/industry standards we participated in compilation

Published

- Code for Design of Municipal Solid Waste Co-processing in Cement Kiln
- Technical Specifications for COVID-19 Medical Waste Co-processing in Cement Kiln
- Regulation on Third-party Environmental Stewardship Service (T/AHEPI 01-2020)

Being compiled

- Fly Ash from Municipal Solid Waste Incineration Used in Cement
- Technical Specification for Co-processing of Solid Waste in Cement Kiln
- Fly Ash from Municipal Solid Waste Incineration Used in Concrete

Conch Venture, an active participant in industry exchanges, has been recognised by many parties in the industry. For instance, it won the Third Prize of Science and Technology Progress Award in Anhui.



Quality Control

Conch Venture has been engaged in the environmental protection industry and constantly expanded the upstream and downstream industries relating to waste incineration power generation and solid waste disposal. New techniques were continuously introduced to improve disposal efficiency and product quality. It aims to create a new navigation mark for the domestic environmental protection industry. Currently, Conch Venture Building Material, CK Engineering, CK Equipment, Jinzhai Engineering, CK Shanghai have obtained the ISO 9001 Quality Management System certificate.



Moreover, in terms of product certification, CK Equipment has secured a product import and export certificate, a Class-A boiler manufacture license, a Class-1 boiler installation, modification and maintenance permit, an A2 pressure vessel manufacture license, as well as a certificate for boiler and pressure vessel manufacture granted by the American Society of Mechanical Engineers.

In order to ensure the smooth operation of the projects in each segment and the timely completion of the disposal and production tasks with quality and quantity targets met, we carry out fine management and work out an Annual Comprehensive Production and Operation Plan every year to specify the quality control indicators for projects, including the volumes of solid and hazardous waste received and disposed of in the solid waste treatment segment, and the amount of waste received at disposal plants and fed into furnaces and on-grid electricity generated from burning of per tonne of waste in the garbage treatment segment. In order to manage the operating conditions of each subsidiary in accordance with the targets set in the plan, we issued a notice on the ranking of indicators and made assessment suggestions monthly according to whether each subsidiary meets the quality targets. We will also issue a reward notifi-

cation for the units that meet the targets.

In addition, Conch Venture constantly pushes ahead with intelligent management. Its production and operation supervision centre officially came into use during the Reporting Period. It built an information management platform, with which it collected and stored the production data of the projects that have been put into production in the Company's environmental protection segments (solid waste treatment and garbage treatment). The platform with functions, including real-time operation monitoring, online fault diagnosis, automatic production data statistics and video monitoring, allows the Company to grasp the project running status in real time. The platform can automatically generate diversified analysis results according to the production data, analyse the performance indicators, and ensure the good operation status of the system via information technology to guarantee the production quality.

In the solid waste treatment segment, due to the complexity and diversity of solid and hazardous waste, we have taken the following measures in order to guarantee no impact on cement production equipment and ensure that products meet quality standards:

The Company applied for a hazardous waste permit in strict accordance with the requirements of national laws and regulations. It conducted business activities related to the receiving and disposal of solid and hazardous waste according to the list of hazardous wastes that it is permitted to dispose of.

Source control was used to control the volume of hazardous constituents.

The solid and hazardous waste was pretreated by crushing and mixing to make the materials meet relevant requirements for feeding into kilns in state, size and other dimensions, so as to minimise the impact on the kiln system.

Advanced devices were equipped and technical management professionals were introduced.

The Company allows entry of solid and hazardous waste under the premise of contract signing, dispatching and meeting of certain conditions. It will check the waste vehicle by vehicle after it is transported to disposal plants.

An advanced programmable compatibility system was used to calculate the compatibility of the materials to be fed into the kilns to keep the quality targets under control.

Sticking to Originality

In addition, the Company's business units took quality control actions in line with their own business characteristics:

Conch Venture Green	CK Engineering	CK Equipment
A product quality management system and a product quality policy have been established according to national standards and norms.	In-process quality control was carried out from signing of a project undertaking contract, design and development, supply of complete sets to construction.	It prioritised quality in terms of work safety. Energy conservation and environmental protection are priorities. Scientific management promotes development. Continuous improvements are conducive to market expansion.

We analyse possible quality problems immediately and work out a plan to carry out measures for rectification of quality problems. Our quality management ability has been improved through problem analysis and review. The Measures for the management of process incidents were laid down during the Reporting Period, which define incidents and clarify handling procedures, etc. Subsidiaries are required to sum up the experience and lessons from incidents in order to eliminate the occurrence of quality problems and ensure the quality of products. During the Reporting Period, none of our products was subject to recalls for quality reasons.

Service Assurance

Conch Venture attaches great importance to the protection of customer rights and interests. It established a sound after-sales service guarantee system for different products and services to aim for optimum customer satisfaction, and clarified after-sales service management procedures. A communication channel between the Company and customers was established at the same time, in a bid to gather timely and effective customer feedback. Therefore, we regularly collected customer opinions and optimised the products and services according to the problems reported by customers to improve customer satisfaction.

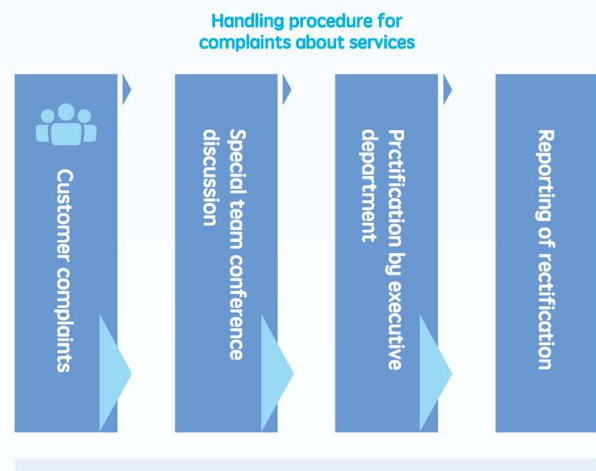
System Guarantee

The systems we formulated for the sale of sheet materials

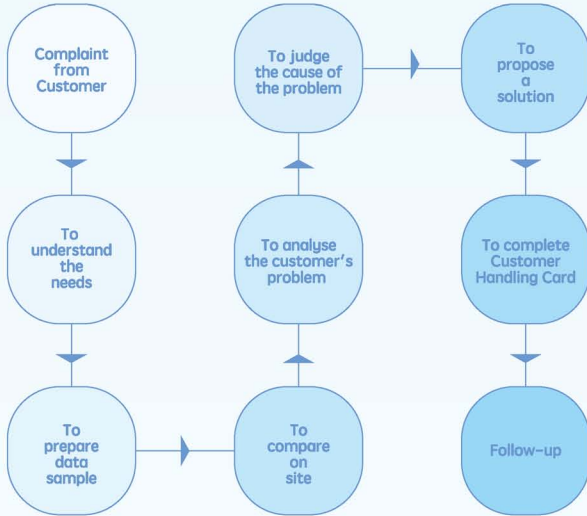
include the Measures for the Management of Sales Service, the Interim Measures for the Management of Customer Refund (Transfer) Business and the Interim Measures for the Management of Receiving, Return and Replacement of Sheet Materials. We included customer feedback and evaluation on product quality, quantity, logistics and so forth into after-sales service to meet customer needs for refund and transfer and return and replacement of products. An after-sales service management system is in place to ensure that customer complaints about large energy-saving devices could be responded within 24 hours. Professionals will be sent to the scene. Meanwhile, problems reported by customers will be checked according to the relevant procedures. For quality problems caused by design or manufacturing, the Company will discuss and optimise the products to improve their quality.

Communication and Feedback

Communication and feedback is a channel to protect the rights and interests of customers. We have established feedback channels, including telephone, fax, email and WeChat, for different product and service lines, which cover all dimensions of customer feedback. Varied feedback mechanisms were established based on our products and services, in order to ensure timely acceptance of customer complaints and improve the service level of each product line.



Handling procedure for complaints about products



Satisfaction Survey

To fully understand customer evaluation, a customer satisfaction system was established to further explore the direction of improvement and research and development of products and services, so as to enhance the competitive advantages of sales service, shipping management and product prices. In terms of products, we conduct a customer satisfaction survey on products every year. In terms of services, a satisfaction survey is conducted on the projects put into operation. the overall satisfaction should exceed 88%. Based on the feedback above, we will set up a working group to sort out and analyses the problems, develop an optimisation scheme and an implementation plan, and continuously improve our products and services.

Among Conch Venture's business segments:



CK Equipment scored a 100% customer satisfaction during the Reporting Period,

100%



CK Engineering got a 93.7% satisfaction,

93.7%



the customer satisfaction for the new building materials segment reached 95%.

95%

Work Safety

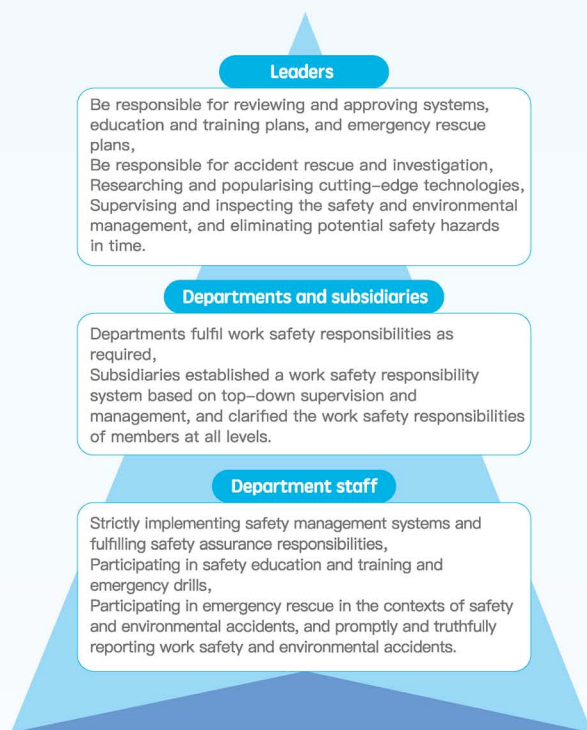
Conch Venture has "established the concept of green development and carried forward the idea of people's lives paramount". It consolidated the foundation of safety management and opened up a new chapter for safe production and operation.

The Company's top priority is always safety, we strictly complies with national and local laws and regulations, including the Work Safety Law of the People's Republic of China, the Emergency Response Law of the People's Republic of China and the Law on Prevention and Treatment of Occupational Diseases of the People's Republic of China. A series of safety management systems were formulated:

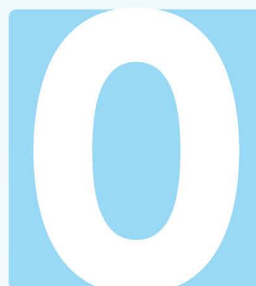
- Identification and control system for potential safety and environmental hazards
- Emergency management system
- Safety management system for interested parties and external workers
- Equipment and facilities safety management system
- Management system for safety and environmental labels
- Management measures for receiving and use of safety expenses
- Safety and environmental education and training system
- Management system for safety and environmental conferences
- Management system for purchasing, distributing and using labour protection articles
- Special operators and special equipment operators
- Management system for field operation in limited space
- Objectives, indicators and general principles for safety and environmental
- Management system for major hazard sources
- Management system for use of dangerous goods
- Occupational health management system
- Field operation safety management system
- Job safety regulations
- Management system for work safety documents and archives
- Guidelines on punishments for violations relating to work safety
- Management system for temporary storage of hazardous waste
- Measures for the management of reporting and investigation of work safety accidents
- Fire safety management system
- Management system for early warning and prediction system of hazard sources

With these management systems, we set up a work safety management committee ("Safety Committee") headed by general manager that is responsible for the management of safety-related matters, and established a work safety responsibility system to define the safety responsibilities of the Safety Committee office, leaders, departments and subsidiaries, as well as department staff.

Organisational structure of work safety responsibility system



We strictly implemented the work safety policy of "safety first, prevention first, and comprehensive management", prevented accidents and took emergency measures, and continuously enhanced the ability to respond to and prevent work safety accidents, so as to maintain our work safety and social stability. Under the guidance of the Safety Committee, Conch Venture signed the letter of responsibilities on safety and environmental annual targets during the Reporting Period, and set forth the next year's work safety management objectives and arranged key safety management tasks after discussion with the committee at early 2020. We successfully achieved the work safety targets for 2020 during the Reporting Period.



- work-related deaths ✕
- serious Work safety accidents or above ✕
- serious fire accidents or above ✕
- serious traffic accidents or above ✕
- new cases of occupational diseases ✕

The Company conducted work safety standardization management work in strict accordance with safety-related regulations and standards. Efforts were made to push forward with the establishment of an occupational health and safety related system to create a standardised management model. It attempted to obtain the certification of OHSAS 18001 or ISO 45001 occupational health and safety management systems. As of the end of the Reporting Period, Haichang Port obtained the level-1 work safety standardization certificate, Wuhu Logistics and CK Equipment got a level-2 work safety standardization certificate, and six subsidiaries including Bozhou Building Material and Conch Venture Building Material received a level-3 work safety standardization certificate. Subsidiaries including CK Equipment, CK Shanghai, CK Engineering, Conch Venture Building Material, Jinzhai Engineering and WH Environmental Protection obtained the OHSAS 18001 or ISO 45001 certificate.



Work safety standardisation certificate



Certificate of occupational health and safety management system

Hazardous Waste Safety

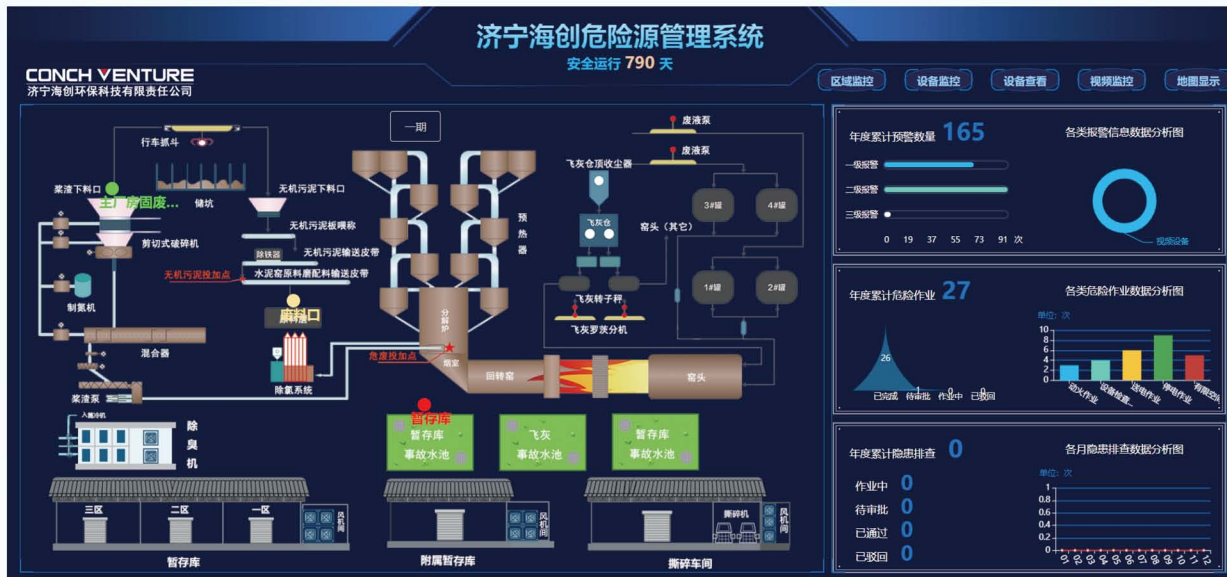
Solid waste treatment is an important business segment of the Company, and the safe and smooth operation is the focus of its safety management. Great importance has been attached to the safety management of hazardous waste. Strict safety management is conducted during the collection, transportation, storage and feeding into kilns process, so as to completely eliminate safety risks.

In order to ensure the transportation safety of hazardous waste during, we have set up a logistics and transportation supervision centre. In accordance with the national regulations on the transfer of hazardous waste, all vehicles should follow the prescribed route. The logistics and transportation supervision centre oversees the vehicles. Vehicles used to transport hazardous waste are equipped with a GPS system. The speed is monitored in real time. A multi-angle camera is installed in the cab to monitor the driver's status at any time. Once transportation safety risks, such as driver fatigue, high speed and deviation from the transportation route, are detected, the system will automatically identify the risks and immediately report to the platform of the supervision centre. The centre can issue a remote warning to the driver via the platform and conduct management. With the operation of the supervision centre, full-time supervision is conducted on vehicles to eliminate all safety problems in the process of transportation.

We also keep a close eye on the condition of hazardous waste transported to disposal plants. Based on the Law on the Prevention and Control of Environmental Pollution by Solid Wastes, the Standard for Pollution Control on Hazardous Waste Storage and other relevant provisions,

we set up the management system for temporary storage of hazardous waste, requesting that hazardous waste should be stored and managed in different areas according to its type and composition. We set up safety signs, installed emergency lighting facilities and left adequate safety exits in the temporary storage space. Safety exits and fire exits are kept clear at all times. Strict requirements are put forward for the in-and-out-storage management and safety management of the temporary storage space.

Furthermore, an early warning management system of hazard sources was introduced to ensure the operation safety after hazardous waste is sent to disposal plants. The management system for early warning and prediction system of hazard sources was laid down to achieve real-time monitoring of key sites, make early warning and prediction, and conduct classified management of hazard sources. The system can detect gas, temperature and other information of hazardous sources in key sites and give an alarm. In the meantime, personnel and operational compliance can be strictly monitored and managed. So, the whole process of hazardous waste disposal can be supervised.



Early warning management system

Sticking to Originality

Safety Training

In order to standardise safety education and training and enhance the safety awareness and protection skills of employees, we require employees to follow the principle of "training before working". They can start to work only after passing the safety training. We organise safety training in accordance with the principle of "unified planning, centralised management, graded responsibility and classified implementation". The Safety Committee works out an annual safety and environmental education and training plan every year according to the training needs of departments and subsidiaries, and inspects the implementation of their relevant training activities. Detailed requirements were put forward to achieve safety training and safety education goals.

Internal staff	<p>Safety managers and staff in special safety-sensitive positions shall receive professional training and obtain corresponding qualifications; New recruits need to receive three levels of safety education and training and occupational health education and training,</p> <p>The pre-job safety training duration shall not be less than 24 class hours, while the job safety training duration for high-risk positions shall not be less than 72 class hours. The annual retraining duration shall not be less than 20 class hours,</p> <p>Complete work safety education and training files were established.</p>
External staff	<p>Dispatched staff needs to conduct education and training on safe job operating procedures and safe operating skills,</p> <p>It conducts safety education and training for interested parties' operators.</p>

According to the current safety management situation and training needs, we compiled training courseware and textbooks during the Reporting Period, invited external experts as lecturers, and organised a number of safety education and training activities with rich contents and in various forms, so as to improve employees' safety awareness and self-protection skills from various aspects, such as safety awareness, operation skills and prevention and control measures.

Potential Hazard Identification

The identification and control system for potential safety and environmental hazards was formulated to establish a long-acting mechanism for the identification and control of potential safety accidents, and protect life and property. We laid down an annual safety inspection plan and carried out safety inspections, including regional mutual inspection, regional inspection, pre-acceptance before production, professional mutual inspection, daily inspection, mid-term inspection and final inspection, in all segments. In addition, we invited a panel of experts in the dangerous chemical industry from China Building Material Test & Certification Group to perform onsite assessment of safety and environmental risks for solid and hazardous waste projects, in order to improve the management of work safety. A list of representative problems was made and issued to the whole Group for reference and rectification. The problems that may cause accidents should be rectified immediately. A scheme needs to be laid down

to eliminate the potential major accidents. Project companies that fail to rectify problems within the time limit will be assessed.

To strengthen the safety management of third parties, we issued a notice on strengthening the safety management of interested parties of projects under construction and checked the fire management, water and electricity management and so forth at construction sites through routine inspection, spot check, regular inspection and surprise inspection in order to get rid of safety risks.

Emergency Management

An emergency management system was established with reference to the Emergency Response Law of the People's Republic of China, and an emergency management team and a daily routine management department were set up, with a view to standardising the emergency management of safety accidents. Adhering to the principle of "putting people first, prevention first, unified leadership, graded responsibility, rapid response, coordinated response, relying on science and technology, and strengthening management", we have compiled and released the work safety accident emergency plan which has been reviewed by experts. Moreover, based on the analysis of hazard sources and risks in each segment, we formulated the overall emergency rescue plan, special emergency plan and onsite handling plan for safety and environmental accidents, and revised the emergency plans every three years.

Conch Venture that emphasises prevention and preparation in advance always prepares sufficient emergency resources and guarantee capacity. Subsidiaries were encouraged to conduct the publicity, education and training of emergency plans in various forms, popularise the knowledge of prevention, avoidance, self-rescue and mutual rescue for safety accidents, and improve the emergency response capacity of all staff. Meanwhile, emergency drill plans are worked out. We hold integrated or special emergency drills every year, evaluate the effect of the drills, analyse the existing problems, and make suggestions for modification of the plans.

Furthermore, we formulated the Measures for the Management of Reporting and Investigation of work Safety Accidents, which stipulate the time limit and requirements for accident reporting, clarify the provisions for investigation and handling of the accidents, and establish the procedures for reporting of information about the accidents, in a bid to standardise the reporting and investigation of work safety accidents, and to prevent and reduce such accidents



External experts were invited to lecture on safety hazards and equipment safety training several times



The Company conducted health, environment and safety (HES) training to enhance core competitiveness



A senior engineer from a research institute of safety and environmental protection was invited to give a safety lecture

Occupational Health

The Company formulated the occupational health management system and other relevant systems according to relevant laws and regulations, including the Work Safety Law of the People's Republic of China, the Law on Prevention and Treatment of Occupational Diseases of the People's Republic of China and the Technical Specifications for Occupational Health Surveillance, in order to standardise the prevention and management of occupational diseases, effectively prevent, control and eliminate the occupational hazards, prevent and treat occupational diseases, and ensure the safety and health of employees at work.

We adhered to the policy of prioritising prevention and preventing and treating occupational diseases, and conducted classified management and comprehensive management. Subsidiaries were required to establish the occupational health management department that is responsible for daily occupational health management, and assign qualified occupational health management personnel to prevent and treat occupational diseases in accordance with relevant national laws and regulations, detect and evaluate occupational hazard factors, organise regular occupational health examination, and carry out publicity, education and training about occupational hazards. We inspected and made statistics of occupational hazards and established occupational health files for employees and persons exposed to occupational hazards:

"Three simultaneities" files for occupational health

Occupational health management files

Occupational health publicity and training files

Files about monitoring, detection and assessment of occupational hazard factors

Employers' occupational health surveillance management files

Workers' personal occupational health surveillance files

Occupational health risk identification

We entrust a professional third party every year to regularly detect all the existing occupational hazard factors according to the Provisions on the Supervision and Administration of Occupational Health in the Work place, detect occupational risk factors, such as dust, ammonia, hydrogen sulfide, benzene series and noise, and assess the protection status. So, the third party will make suggestions on improvement to help us better reduce occupational health risk.

We conduct occupational health examination for new recruits and provide an occupational health checkup for employees every year. Two directives, Occupational Health Examination Items for Grate Furnace Segment and Occupational Health Examination Items for Solid and Hazardous Waste Segment, were formulated and released for two major segments at high risks. Subsidiaries were urged to conduct occupational health examination on time and detect occupational hazard factors in the workplace. The summary report about occupational health examination was made. The aim is to identify employees' health risks in a timely manner and track their health status.

Occupational health protection

We identified occupational health risk factors specifically for power generation via household waste incineration on a grate furnace and industrial solid and hazardous waste disposal, and found the main hazard sources and existing risks, in a bid to further improve the working environment for employees and reduce occupational safety risks. The protective facilities and technical measures introduced to cope with risks include those for dust removal, anti-noise, anti-poison, protection from high temperatures, and UV protection. In summer, employees were provided with heatstroke prevention and cooling products, and in winter with cold-proof and anti-freezing products. We widely used new technologies, new processes, new materials and new devices to create a good and healthy working environment for employees.

Occupational health training

In order to improve employees' awareness of occupational health protection and standardise operational compliance, the Company held various training activities, and stipulated the content and duration of occupational health training. We required all subsidiaries to provide pre-employ-

ment occupational health education and training and regular on the job occupational health training for employees exposed to occupational hazards. The duration of the first-time training shall not be less than 8 hours, and the duration of continuing education shall not be less than 4 hours per year. Our main occupational health training content is as follows:

Main occupational health training content
Basic knowledge of national laws and regulations on prevention and treatment of occupational diseases
Occupational health management system and job operation rules of units
Main occupational hazard factors on the job and prevention measures
Use and maintenance of personal labour protection articles
Workers' occupational health protection rights and obligations, etc

During the Reporting Period, no occupational disease incidents or major safety accidents occurred. Our performance related to work safety is as follows:

Indicators	Unit	2020
Number of work-related deaths	Person	0
Incidence rate of minor injuries	‰	1.23
Absence rate	‰	0.31
Work-related injury rate	‰	1.23
Hours lost due to work injuries	Hour	3,080



Epidemic Prevention and Control

Conch Venture set up a leading group for epidemic prevention and control in the early stage of COVID-19 epidemic. The general manager heads the leading group to discuss countermeasures, lay down measures and ensure accurate prevention and control. The Company formulated and released the emergency notice on prevention and control of COVID-19 pandemic, requiring subsidiaries to set up a prevention and control organisational structure at all levels, guide the prevention and control of the epidemic, investigate whether employees contract the coronavirus, track their behaviours, mobilise anti-epidemic supplies, etc.

During the stable period of the epidemic, the Company strengthened its daily prevention and control work, regularly attended epidemic prevention and control coordination meetings held by Anhui Conch Group Co., Ltd., and issued 12 relevant management documents in the spirit of the meetings. The prevention and control measures it took are as follows:

Publishing Dining guidelines and Office guidelines.
Strictly checking incoming and outgoing workers, disinfecting them and taking their temperature.
Requiring that returnees from medium or high-risk areas and foreign countries shall have nucleic acid tests and isolated observation.
Requiring workers on duty to wear masks.
Providing masks and protective clothing for essential workers.
Requiring that duty rooms should be disinfected twice a day.
Early detection, early isolation, early treatment.



Moreover, efforts were stepped up to popularise the knowledge on epidemic prevention and control. We produced publicity materials, such as the Manual of COVID-19 prevention and control tips and 99 pieces of scientific information you should know about COVID-19, and hung banners on prevention and control of the epidemic in plants and office areas to urge employees to raise and enhance their awareness. Conch Venture cooperated with the Anhui branch of Emergency Management E-Learning Academy to open an online training course on safety after resumption of work and production. More than 3,000 participants received 24 class hours of the safety training.



Putting People First

2020 ESG REPORT

Environmental, Social and Governance Report

Employees are our most valuable asset. We build a personalised career development channel for employees, establish a sound promotion system, create an inclusive and energetic working atmosphere, pay attention to and help employees in career planning, enhance their skills, enthusiasm and sense of mission, and achieve mutual benefit and win-win results between us and employees.

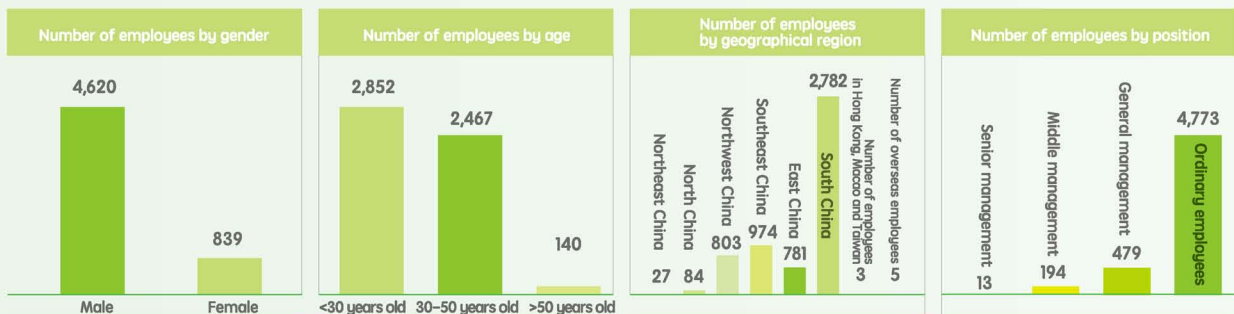
Employment

The Company strictly complies with relevant laws and regulations, including the Company Law, the Labour Law, the Labour Contract Law, the Law on the Protection of Minors and the Social Insurance Law of the People's Republic of China, and State Council's Provisions on the Prohibition of Using Child Labor and Special Rules on the Labor Protection of Female Employees. Internal systems including the Employee management rules were established to promote its development. It strives to build harmonious and stable labour relations.

Employees are an important force for the future development of Conch Venture. The Company recruits talents through various channels such as campus recruitment and experienced recruitment. When recruiting employees, we review every potential candidate with the principle of fairness. We strictly check the identity information of new recruits before signing labour contracts with them, so as to avoid child labour or forced labour. In addition, we also receive reports of violations in recruitment and will investigate and deal with them immediately if any. During the Reporting Period, the Company was found with no incidents of child labour or forced labour. Because of its strict management, the Company was awarded the "A" rating in the annual labour and security review by Wuhu Human Resources and Social Security Bureau in 2020.

Conch Venture upholds the principles of diversity and equality in the workplace and strives to give equal pay for equal work for men and women and implement the humanised employment policy. It provides employees with equal and fair development opportunities and development space, so that they can clearly define their role, which will help the Company achieve good performance, enhance its competitiveness and ensure its long-term development. More than that, the Company fully respects and protects the labour rights and interests of minority employees, especially women and employees in difficulties, advocates fair and good competition relations, and does not discriminate against any employees due to gender, age, marital status, religious belief, race, nationality or health status.

As of the end of the Reporting Period, the Group had 5,459 full-time employees who signed labour contracts, and the number of employees increased by 27.9% compared to that in 2019. Details are as follows:



The total employee turnover rate was about 9.28%.

Putting People First

Benefits and Care

Conch Venture believes that employees are the backbone of its survival, development and growth. Great importance is attached to employees' physical and mental health and career development. The Company has established a complete benefits system in accordance with the relevant regulations of the central or local governments, and strives to provide employees with a good working environment, a competitive remuneration system and warm supporting benefits.

Work-life Balance

Employees are encouraged to achieve work-life balance. The Company, which takes full account of the physical and mental health and legitimate rights and interests of employees, promises to arrange working hours reasonably to avoid unnecessary overtime. It promises to set a reasonable work schedule for posts that are covered by the flexitime system. The Company actively arranges time offer employees who need to work overtime or at night to ensure that employees get sufficient rest.

Team Building

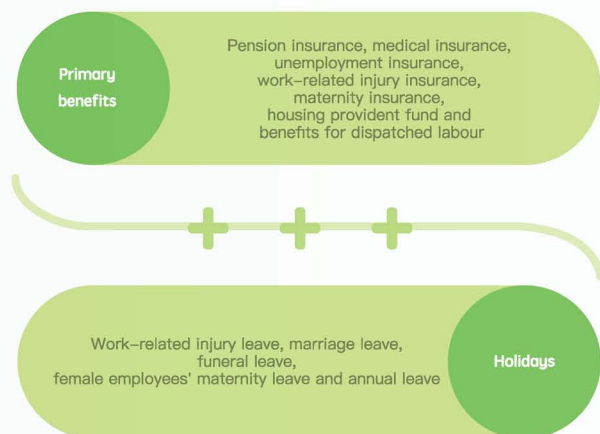
A variety of recreational and sports activities are held frequently to enrich the daily life of employees, in order to enable them to achieve work-life balance, improve their sense of happiness and pride, and promote the Company's long-term healthy development.

Compensation and Benefits

The Company provides a complete compensation system for employees, including competitive compensation, social insurance and housing provident fund. Besides, it also creates a good working environment and provides warm supporting benefits for employees.

Team Building Activities

The labour union of Conch Venture held a team building activity themed on "Celebrate Mid-Autumn Festival, Welcome National Day" in a recreational vehicle campground in Sanshan District, Wuhu on 26 September 2020, in a bid to enrich the spare time life of employees, promote the construction of corporate culture, enhance team cohesion, and create a warm festival atmosphere. Sports meets in various forms were held on a regular basis. CK Engineering organised a fitness competition for employees in September 2020 to improve the physical and mental health of employees, create a corporate culture spirit of hard work and dedication, and enhance the centripetal force of the Company.



Support for Employees

Relying on an effective mutual assistance mechanism for internal employees established by the labour union, Conch Venture protects the basic rights of women and vulnerable groups, provides assistance to employees in difficulty and their families, provides convenience for minority employees and employees of other faiths, and creates a warm and comfortable family for employees.

Festival Care

On the International Women's Day, Dragon Boat Festival and other festivals, the Company distributes gifts to employees and sends greetings and blessings to each employee, in order to make them continuously work hard on their post and actively forge ahead. It also show the care to the employees and let them feel the warmth of the company.



Advices and Suggestions

Conch Venture actively listens to the voice of employees. In terms of complaints, the Company encourages employees to provide feedback and offer advices via employee suggestion boxes, rationalisation suggestion walls and other ways. In addition, employees can report problems to the human resources department, the labour union and leaders at all levels. Some subsidiaries organise regular staff forums to listen to the suggestions and opinions of employees. After receiving the opinions or suggestions, the Company will deal with them in strict accordance with the prescribed procedures to ensure that employees are given a fair treatment and it actively satisfies their reasonable requests.



Organize employee symposiums



Talent Development

The Company always believes that "innovation drives corporate development and talents lead technological innovation", with great importance attached to the training of innovative talents in science, technology, management and other aspects. It is committed to building a comprehensive training system, through which it provides employees with rich training resources and build their capabilities in all aspects. With a clear promotion channel and an incentive mechanism, the Company motivates employees to fight hard to achieve common prosperity.

Employee Promotion

We have divided positions into different categories and ranks according to our business and operation. We have set corresponding requirements for responsibilities and performance evaluation for different positions, in a bid to provide basis and criteria for employee promotion.

Employee Training

The Company works out an annual training scheme based on its training management rules, and periodically or irregularly supervises and inspects the training of subsidiaries. It pushes employees to keep pace with the times and gives them a learning platform and basic support. It shoulders the responsibilities to employees and itself.

In addition to regular training, the Company also strongly supports employees in obtaining professional qualifications. It conducts professional title evaluation on junior, middle, senior and professoriate senior engineers every year, which covers all the in-service employees. The applicants are skilled workers in cement process, machinery, electrical engineering, civil engineering, chemical process and thermal energy. A total of 84 employees were rated as engineers of different ranks during the Reporting Period.

During the Reporting Period, the Company's coverage of trainings reached 100%. The average spending on training and development of employees was RMB2,000 per person. Employees received an average of 260 hours of training.

Employee promotion path

Leadership

consisting of three ranks, chief, deputy and assistant, at the top level.

Middle management

consisting of three ranks, chief, deputy and assistant, at the middle level.

Ordinary employees

consisting of five ranks, manager, professional & technical staff, operator, auxiliary and logistics staff.

Promotion assessment and appointment principles

With both virtue and ability, virtue before ability

Elected cadres should have good moral character, excellent working ability and a good track record.

Merit-based selection after fair and open competition

The Company performs both promotions and demotions on cadres and establishes a mechanism for selection and appointment, evaluation and adjustment, and elimination and withdrawal.

Full deliberation, democratic centralism

The evaluation, selection, appointment, adjustment, elimination and withdrawal of middle-level cadres must be fully deliberated by subsidiaries' leadership and collectively studied. Or the Company's cadre review group, functional departments and subsidiaries discuss it.

New employee training

According to the job characteristics of new employees, specific training plans were made, which further enhanced employees' understanding of the Company's production process and operation principle and improved their own job skills, laying a solid theoretical foundation for later practical training.

Understanding of the corporate culture

The Company thoroughly carried out publicity for corporate culture. With different forms of publicity of its subsidiaries, the Company has improved itself and built a good image, providing cultural impetus for its healthy and sustainable development.

Training on corporate systems

It further established the consciousness of internal control and management, got an insight into the content of systems, and standardised operations and maintained compliance.

Training on improvement of professional skills

In order to strengthen the skills and expertise of operators and improve their proficiency in devices, the onsite operation training model was adopted to further enhance the practical operation ability of employees and improve the overall level of operators. The goal is to provide a strong guarantee for the safe and stable operation of units.

Training on improvement of personal competence

Employees, who learned what they did not have in the past, were required to learn more ahead of time in different positions. The employees were dispatched to receive training on production statistics of laboratories. The Company actively popularised the innovative management model of "one person with multiple skills, one specialty with multiple abilities".

Seeking Common Development

2020 ESG REPORT

Environmental, Social and Governance Report

Seeking Common Development

Conch Venture realises that "society is the foundation of corporate development". Considering the characteristics of its own businesses, the Company combines its development with the development of suppliers and the community, and practices multi field and multi dimensional social responsibilities, so as to continuously create value for the society.

Supply Chain Management

In order to pursue the overall coordination of the whole supply chain and the effectiveness of the whole system, we strive to create a sustainable supply chain system and build long-term partnerships with reliable suppliers to achieve value co-creation. The Group formulated and implemented the Procurement Control Procedures, Interim Measures for Material Supply Management, Interim Measures for Contract Management and other provisions to regulate the whole process from supplier development, selection, control to review. Each part of the process has been optimised to ensure that suppliers share the Group's core values and concept of sustainable development.

Supplier Selection

According to laws and regulations on architectural engineering, Conch Venture classified engineering projects by type and size and made a list of the qualifications suppliers need at different stages, covering design, supervision and construction, and third party audits. Suppliers need to provide corresponding qualifications according to the list, and pass two level audits by the engineering management department and the audit department, after which they will be finally added to the Group's library of suppliers.

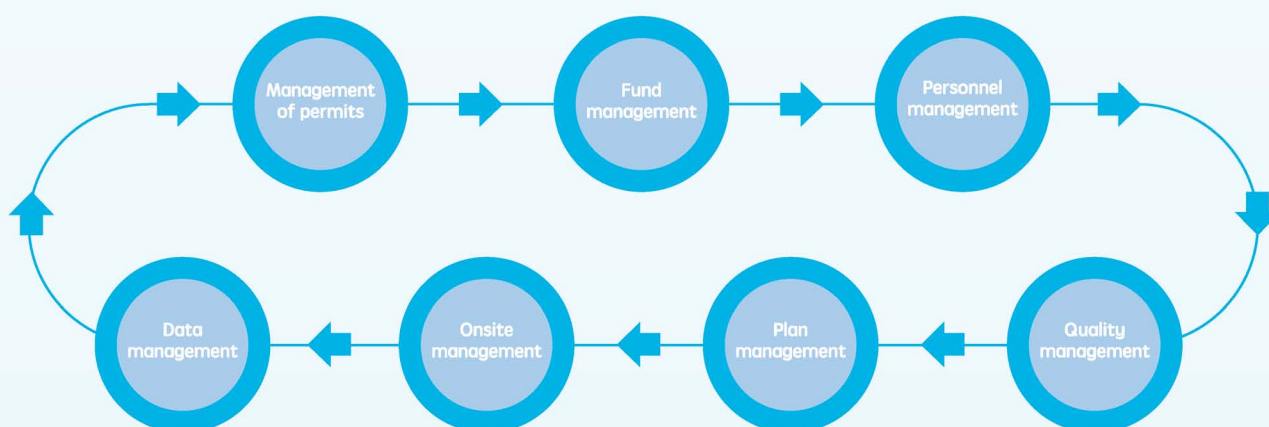
Supplier Management

Suppliers of engineering projects are our important suppliers. Conch Venture assesses and scores the contracted suppliers of engineering projects every six months from 7 dimensions, such as personnel, quality and progress. High-scored suppliers will be preferred as quality suppliers. Substandard suppliers will be excluded from the library of suppliers, with whom the Company will not cooperate. We pay great attention to the operational compliance of suppliers, conduct regular, surprise and other forms of inspections on the construction site, and standardise the construction management of suppliers throughout the whole process and in an all-round way, so as to effectively combine procurement and quality in the early stage of the project and guarantee the responsible operation in the future.

Conch Venture values the sustainability performance of suppliers and cooperates with them only after they sign sustainability agreements. Meanwhile, it signs integrity agreements, environmental agreements, safety commitment and other documents with suppliers, and integrates ESG concept into supplier management, checking in advance the quality and social benefits of the project in the future.

Supplier Support

In order to jointly create a new business format for the industry's sustainable development, we have established a corresponding mechanism to assist suppliers in improving their management, safety and so forth. Safety managers were dispatched to organise training on laws and regulations and operating rules about work safety for constructors as scheduled, in order to improve the safety awareness and safety skills of their workers and promote the improvement of the project management ability of suppliers.



Community Investment

Conch Venture, which regards itself as an important part of the community, pays attention to the social needs, and seeks the common development of itself and the community. The Company not only solved the problems of "garbage besieging a city", land occupation, environmental pollution and other social problems for business locations, but also made outstanding contributions to the community building, fight against the epidemic, social stability, etc.

Community Care

Conch Venture is devoted to making mountains green and waters clear. Besides, it held humanistic care activities, cared the surrounding residents and shouldered social responsibilities to contribute to the construction of a beautiful civilised society.

It organised visiting activities to send cooling supplies in summer and cold-proof products in winter.

Conch Venture's labour union periodically organised visiting activities to send cooling supplies in summer and cold-proof products in winter. It prepared food and other supplies ahead of time, showed care in villages and sent sincere wishes to people.



Fight against the Epidemic

In the face of the COVID-19 epidemic, Conch Venture actively responded to local governments' anti-epidemic policies and fulfilled its social responsibilities

Voluntarily transporting anti-epidemic supplies

In early February 2020, Conch Venture was entrusted by donees, the Government of Xiaonan District, Xiaogan City, Hubei Province and Wuhan Municipal Headquarters for COVID-19 Epidemic Prevention and Control to transport a batch of anti-epidemic supplies, including disinfectants and medical alcohol, to the frontline of the fight against the epidemic in Hubei.

Since most of the anti-epidemic supplies are chemicals, the security level of transportation vehicles is relatively high. Our Wuhu Logistics staff shouldered the heavy burden of epidemic prevention and control and volunteered to send the supplies to Hubei. This is what employees of a large enterprise in the environmental protection industry should do.



Taking the initiative to undertake the task of emergency harmless disposal of medical waste

Baoshan Environment joined hands with the Bureau of Ecology and Environment of Baoshan City on the afternoon of 13 February to hold an emergency drill of the disposal of medical waste generated due to the epidemic.

In the drill, medical waste was promptly and safely disposed of through pretreatment, sealed packaging, disinfection, safe transfer, handover, unloading, incineration, etc., which improved Baoshan City's emergency response and coordination capabilities to dispose of medical waste. At the same time, through the drill, Baoshan Environment has perfected warning, vigilance and other restrictive measures, and optimised the medical waste feeding method, which effectively prevented the secondary infection of the virus and erected a solid line of defense for epidemic prevention and control.



by dispatching volunteers, escorting emergency supplies and assisting governments in the disposal of medical waste.

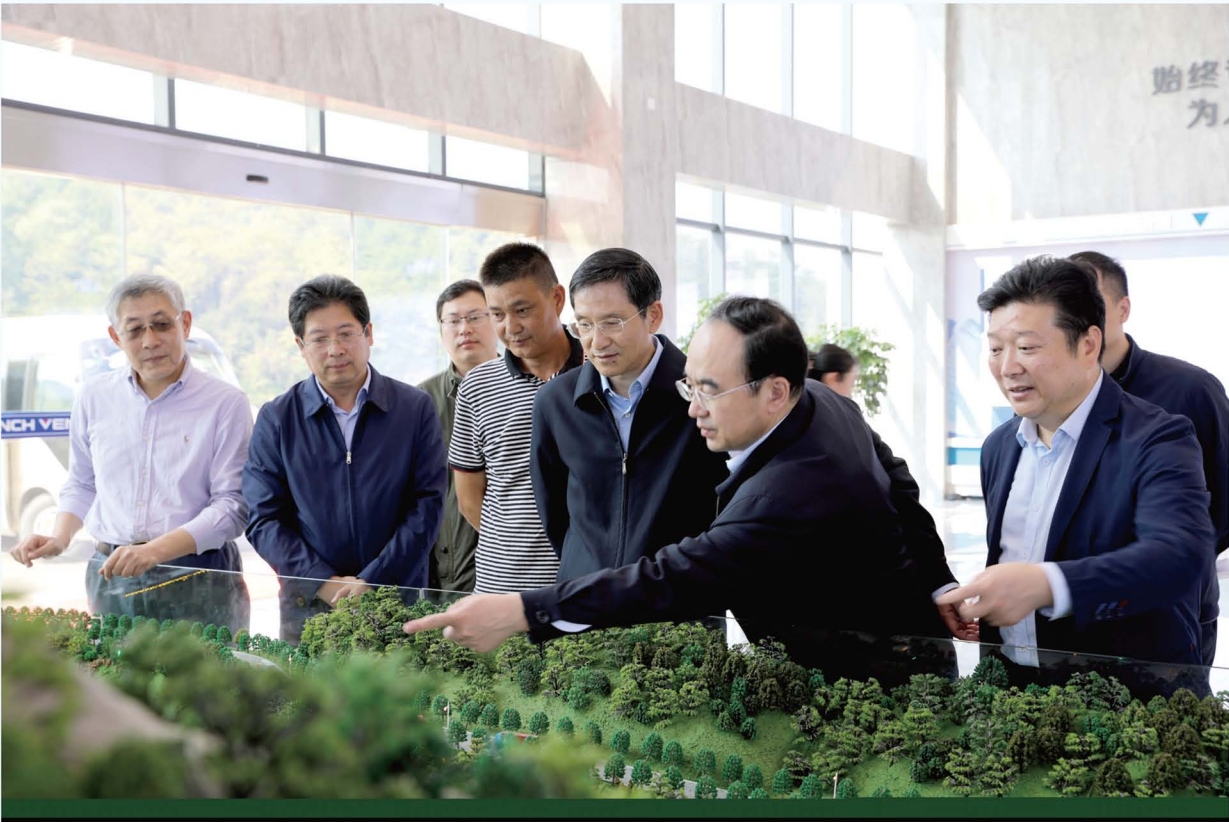
Visit and Investigation

We actively received governments and regulatory authorities at all levels that paid visits and made investigations into us, and constantly drew the attention and increased the understanding of environmental protection industry. By sharing industry advantages and the status quo, we obtained more opportunities for industry optimisation, which promoted the development and growth of the industry.

A delegation led by Chen Xiaoping, vice governor of Jiangxi Province, accompanied by Xu Yanbin, director of the provincial environmental protection department, visited Yiyang Energy

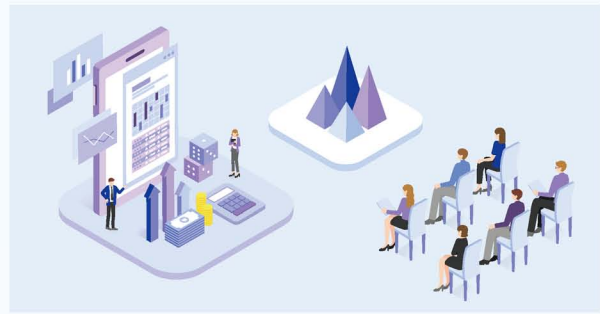
A delegation led by Chen Xiaoping, member of the leading Party group and vice governor of Jiangxi Province, accompanied by Xu Yanbin, director of the provincial environmental protection department, visited Yiyang Energy on the morning of 28 October 2020. By leading the delegation to visit the exhibition hall on the first floor, the central control room, the garbage crane and the leachate treatment workshop, we explained the project process to the delegation and introduced the development prospect of our environmental protection and energy conservation segment.

Through the visit, the delegation gained greater insight into power generation via household waste incineration on a grate furnace. It hoped that Conch Venture will make use of the local advantages of Shangrao to actively promote the upgrading and transformation of the environmental protection and energy conservation industry in the city, better facilitate the construction of local ecological civilisation and promote the circular development of local economy.



Holding a reverse roadshow to enhance communication

From 4–6 November 2020, Conch Venture invited approximately 30 domestic brokerages and institutional investors to participate in an annual reverse roadshow in Chongqing, aiming to demonstrate to the capital market the Company's achievements in the high-quality development path in the field of environmental protection, increase the effect of face-to-face communication between investors and the Company, enhance investors' recognition of its value and strengthen their investment confidence.



Building a Beautiful Homeland

Conch Venture is active in shouldering social responsibilities. Starting from the fields where it operates business, the Company served the public with its industry advantages and assisted governments in destroying illegal products, contributing to the construction of a beautiful homeland with healthy, civilised and harmonious development.

During the Reporting Period, Guiyang Environment assisted Guizhou Medical Products Administration in destroying counterfeit and inferior drugs and medical devices. More than 193,000 boxes of fake and substandard drugs and medical devices were destroyed, involving more than 20 varieties. Suzhou Environment assisted local government departments in the harmless de-

struction of seized ice and other drugs, which ensured the rapid destruction of drugs and prevented environmental pollution caused by the destruction process. We have contributed to the harmonious and stable development of the society through our own concrete actions.

During the Reporting Period, the Company's performance in community activities is as follows:

Indicators	Unit	2020
Reception of social visitors	Person-time	600
Hours of employees' volunteer activities	Hour	220

APPENDIX: Index to the ESG
Reporting Guide of the SEHK'S

2020 ESG REPORT

Environmental, Social and Governance Report

Subject Areas, Aspects, General Disclosures and KPIs		Disclosure paragraph
A. Environmental		
Aspect A1	Emissions	
General Disclosure	Information on: (a) Policy; and (b) compliance with relevant laws and regulations that have a significant impact on the issuer relating to air and greenhouse gas emissions, discharges into water and land, and generation of hazardous and non-hazardous waste.	Green future
KPI A1.1	The types of emissions and respective emissions data.	Green Future: Emission Management
KPI A1.2	Greenhouse gas emissions (in tonnes) and, where appropriate, intensity (e.g. per unit of production volume, per facility)	Green Future: Energy Use
KPI A1.3	Total hazardous waste produced (in tonnes) and, where appropriate, intensity (e.g. per unit of production volume, per facility).	Green Future: Emission Management
KPI A1.4	Total non-hazardous waste produced (in tonnes) and, where appropriate, intensity (e.g. per unit of production volume, per facility).	Green Future: Emission Management
KPI A1.5	Description of measures to mitigate emissions and results achieved.	Green Future: Emission Management
KPI A1.6	Description of how hazardous and non-hazardous wastes are handled, reduction initiatives and results achieved.	Green Future: Emission Management
Aspect A2	Use of Resources	
General Disclosure	Policies on the efficient use of resources, including energy, water and other raw materials. Note: Resources may be used in production, in storage, transportation, in buildings, electronic equipment, etc.	Green Future: Energy Use and Use of Resources
KPI A2.1	Direct and/or indirect energy consumption by type (e.g. electricity, gas or oil) in total (kWh in '000s) and intensity (e.g. per unit of production volume, per facility).	Green Future: Energy Use
KPI A2.2	Water consumption in total and intensity (e.g. per unit of production volume, per facility).	Green Future: Use of Resources
KPI A2.3	Description of energy use efficiency initiatives and results achieved.	Green Future: Energy Use
KPI A2.4	Description of whether there is any issue in sourcing water that is fit for purpose, water efficiency initiatives and results achieved.	Green Future: Use of Resources
KPI A2.5	Total packaging material used for finished products (in tonnes) and, if applicable, with reference to per unit produced.	Green Future: Use of Resources
Aspect A3	The Environment and Natural Resources	
General Disclosure	Policies on minimising the issuer's significant impacts on the environment and natural resources.	Green future
KPI A3.1	Description of the significant impacts of activities on the environment and natural resources and the actions taken to manage them.	Green future

APPENDIX: Index to the ESG Reporting Guide of the SEHK'S

Subject Areas, Aspects, General Disclosures and KPIs		Disclosure paragraph
B. Social		
Employment and Labour Practices		
Aspect B1	Employment	
General Disclosure	Information on:(a) Policy; and (b) compliance with relevant laws and regulations that have a significant impact on the issuer[Break]relating to compensation and dismissal, recruitment and promotion, working hours, rest periods, equal opportunity, diversity, anti-discrimination, and other benefits and welfare.	Putting People First: Employment
KPI B1.1	Total workforce by gender, employment type (for example, full- or parttime), age group and geographical region.	Putting People First: Employment
KPI B1.2	Employee turnover rate by gender, age group and geographical region.	Putting People First: Employment
Aspect B2	HEALTH AND SAFETY	
General Disclosure	Information on:(a) Policy; and (b) compliance with relevant laws and regulations that have a significant impact on the issuer relating to providing a safe working environment and protecting employees from occupational hazards.	Sticking to Originality: Work Safety
KPI B2.1	Number and rate of work-related fatalities .	Sticking to Originality: Work Safety
KPI B2.2	Lost days due to work injury.	Sticking to Originality: Work Safety
KPI B2.3	Description of occupational health and safety measures adopted, and how they are implemented and monitored.	Sticking to Originality: Work Safety
Aspect B3	Development and Training	
General Disclosure	Policies on improving employees' knowledge and skills for discharging duties at work. Description of training activities.Training refers to vocational training. It may include internal and external courses paid by the employer.	Putting People First: Talent Development
KPI B3.1	The percentage of employees trained by gender and employee category (e.g. senior management, middle management).	Putting People First: Talent Development We will disclose the percentage of trained employees by gender and employee category after strengthening refined management in the future
KPI B3.2	The average training hours completed per employee by gender and employee category.	Putting People First: Talent Development We will disclose the percentage of trained employees by gender and employee category after strengthening refined management in the future
Aspect B4	Labour Standards	
General Disclosure	Information on:(a) Policy; and (b) compliance with relevant laws and regulations that have a significant impact on the issuer relating to preventing child and forced labour.	Putting People First: Employment
KPI B4.1	Description of measures to review employment practices to avoid child and forced labour.	Putting People First: Employment
KPI B4.2	Description of steps taken to eliminate such practices when discovered.	Putting People First: Employment

OPERATING PRACTICES		
Aspect B5	Supply Chain Management	
General Disclosure	Policies on managing environmental and social risks of the supply chain.	Seeking Common Development: Supply Chain Management
KPI B5.1	Number of suppliers by geographical region.	We will disclose the number of suppliers by region after strengthening refined management in the future
KPI B5.2	Description of practices relating to engaging suppliers, number of suppliers where the practices are being implemented, and how they are implemented and monitored.	Seeking Common Development: Supply Chain Management We will disclose the number of suppliers that implement relevant practices to it after strengthening refined management in the future
Aspect B6	Product Responsibility	
General Disclosure	Information on:(a) Policy; and (b) compliance with relevant laws and regulations that have a significant impact on the issuer relating to health and safety, advertising, labelling and privacy matters relating to products and services provided and methods of redress.	Sticking to Originality
KPI B6.1	Percentage of total products sold or shipped subject to recalls for safety and health reasons.	Sticking to Originality: Quality Control
KPI B6.2	Number of products and service related complaints received and how they are dealt with.	Sticking to Originality: Service Assurance We will disclose the number of complaints about products and services after strengthening refined management in the future
KPI B6.3	Description of practices relating to observing and protecting intellectual property rights	Sticking to Originality: R&D and Innovation
KPI B6.4	Description of quality assurance process and recall procedures.	Sticking to Originality: Quality Control
KPI B6.5	Description of consumer data protection and privacy policies, and how they are implemented and monitored.	Sticking to Originality: Service Assurance
Aspect B7	Anticorruption	
General Disclosure	Information on: (a) Policy; and (b) compliance with relevant laws and regulations that have a significant impact on the issuer relating to bribery, extortion, fraud and money laundering.	About Conch Venture: Business Ethics
KPI B7.1	Number of concluded legal cases regarding corrupt practices brought against the issuer or its employees during the reporting period and the outcomes of the cases.	About Conch Venture: Business Ethics
KPI B7.2	Description of preventive measures and whistle-blowing procedures, and how they are implemented and monitored.	About Conch Venture: Business Ethics Seeking Common Development: Supply Chain Management
COMMUNITY		
Aspect B8	Community Investment	
General Disclosure	Policies on community engagement to understand the needs of the communities where the issuer operates and to ensure its activities take into consideration the communities' interests.	Green Future: Opportunities from Clean Technologies Seeking Common Development: Community Investment
KPI B8.1	Focus areas of contribution (e.g. education, environmental concerns, labour needs, health, culture, sport).	Green Future: Opportunities from Clean Technologies Seeking Common Development: Community Investment
KPI B8.2	Resources contributed (e.g. money or time) to the focus area.	Green Future: Opportunities from Clean Technologies Seeking Common Development: Community Investment

2020

ENVIRONMENTAL, SOCIAL AND GOVERNANCE REPORT 2020

2020年環境、社會及管治報告

(Incorporated in the Cayman Islands with limited liability)

(於開曼群島註冊成立的有限公司)

Stock code 股份代號：586